

GDEcD - YOUR RESOURCE FOR ECONOMIC DEVELOPMENT

Rural Georgia Business Partnerships
November 29, 2017



DIVERSE ECONOMIC DEVELOPMENT OPPORTUNITIES IN EVERY COMMUNITY

GDEcD uses an integrated approach to economic development to facilitate jobs and investment opportunities around the state.

- Attract new business investments
- Assist existing industry expansion
- Encourage small businesses
- Locate new markets for Georgia products
- Attract tourists
- Increase entertainment production
- Strengthen companies through innovation
- Expand international relationships
- Promote the arts
- Grow the state's workforce

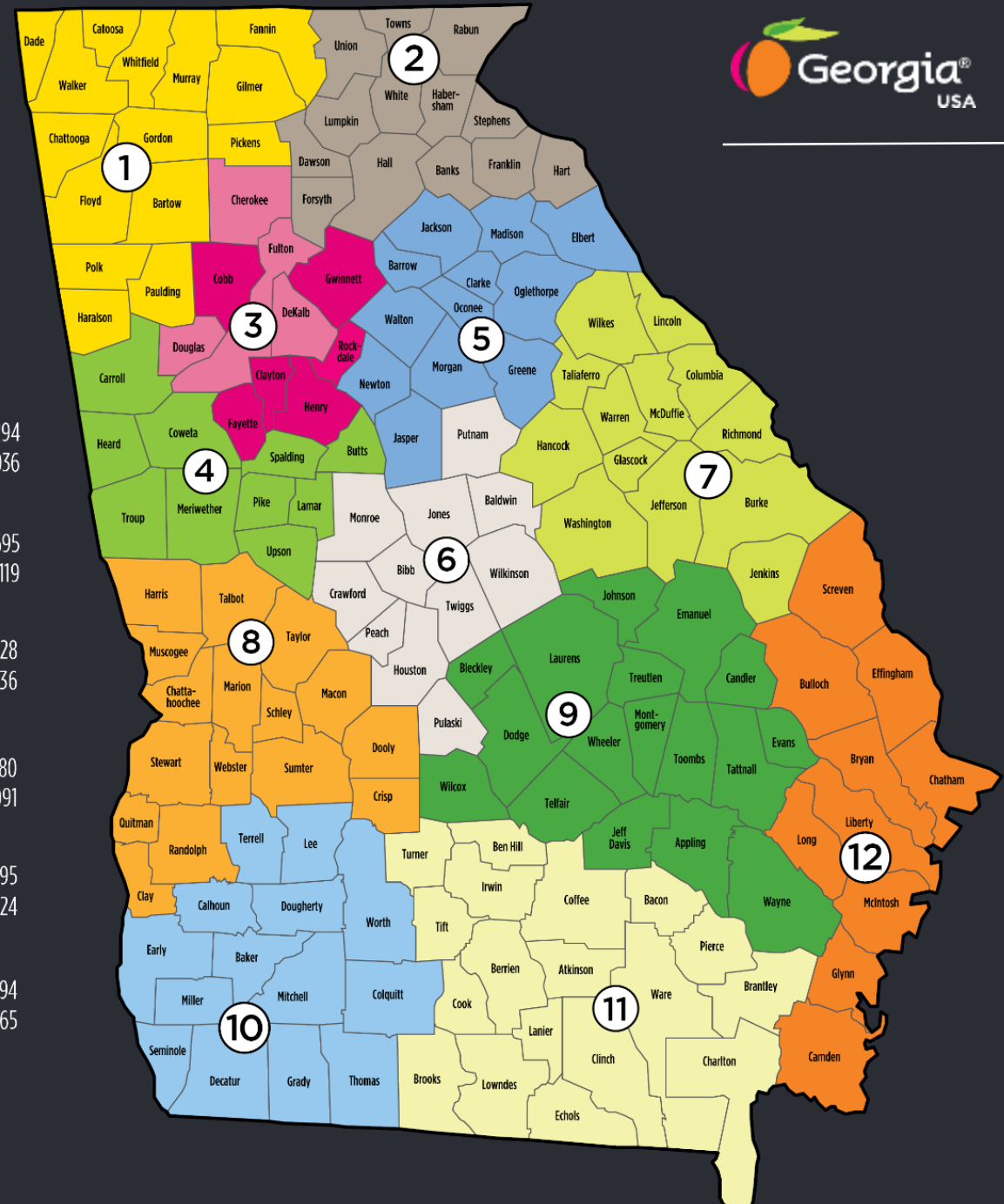


GLOBAL COMMERCE – REGIONAL SERVICES MAP

- Global Commerce Regional Project Managers
- International Trade Representatives

| | |
|--|---|
| 1 Stephanie Searce - PM-EIRR (404) 640.0107 Alice Carson - ITM (678) 640.4365 | 7 Adela Kelley - PM-EIRR (706) 792.7294 Shehzin Tietjen - ITM (404) 962.4036 |
| 2 Tammy Caudell - PM-EIRR (404) 710.3581 Alice Carson - ITM (678) 640.4365 | 8 Candice Scott - PM (404) 217.6695 Kerry Barnett - ITM (404) 962.4119 |
| 3 Lindsay Martin - Director, EIRR (404) 831.0944 Taube Ponce - ITM (404) 962.4118 | 9 Ryan Waldrep - PM-EIRR (229) 868.3428 Shehzin Tietjen - ITM (404) 962.4036 |
| 3 Mary Ellen McClanahan - PM-EIRR/Director ESB (404) 962.4820 Priya Verma - ITM (404) 962.4124 | 10 Tina Herring - PM-EIRR (404) 804.5580 Josh Jacob - ITM (404) 962.4091 |
| 4 Maggie Laton - PM-EIRR (404) 205.9430 Josh Jacob - ITM (404) 962.4091 | 11 Michelle Shaw - PM-EIRR (229) 386.3095 Priya Verma - ITM (404) 962.4124 |
| 5 Lindsay Martin - PM-EIRR (404) 831.0944 Taube Ponce - ITM (404) 962.4118 | 12 Alyce Thornhill - PM-EIRR (404) 416.8094 Alice Carson - ITM (678) 640.4365 |
| 6 Candice Scott - PM-EIRR (404) 217.6695 Kerry Barnett - ITM (404) 962.4119 | |

PM-EIRR: Project Manager
- Existing Industry and Regional Recruitment
ITM: International Trade Manager



GEORGIA TOURISM— REGIONAL MAP

- Regional Tourism Project Managers
- Visitor Information Center Staff

Georgia Travel Region Offices

Historic High Country

Janet Cochran
145 Shadow Rock Drive
Tunnel Hill, Ga. 30755
M: 404.276.9142
jcochran@georgia.org

Northeast Georgia Mountains

Cheryl Smith
PO Box 3116
Gainesville, Ga. 30503
Lanier Technical College
2990 Landrum Education Drive
Building 500
Oakwood, Ga. 30566
P: 770.535.5757
M: 678.640.4355
csmith@georgia.org

Atlanta Metro

Randi Greene
75 Fifth Street, NW, Suite 1200
Atlanta, Ga. 30308
P: 404.962.4188
M: 404.693.0680
rgreene@georgia.org

Presidential Pathways

Holly Winner
P.O. Box 526
I-85 North GA/AL Line
West Point, Ga. 31833
M: 404.804.5678
hwinner@georgia.org

Historic Heartland

Rebekah Snider
840 Willow Lake Drive
Milledgeville, Ga. 31061
M: 404.548.2083
rsnider@georgia.org

Classic South

Mandy Barnhart
2331 Union Point Hwy
Greensboro, Ga. 30642
M: 404.357.7582
mbarnhart@georgia.org

Magnolia Midlands

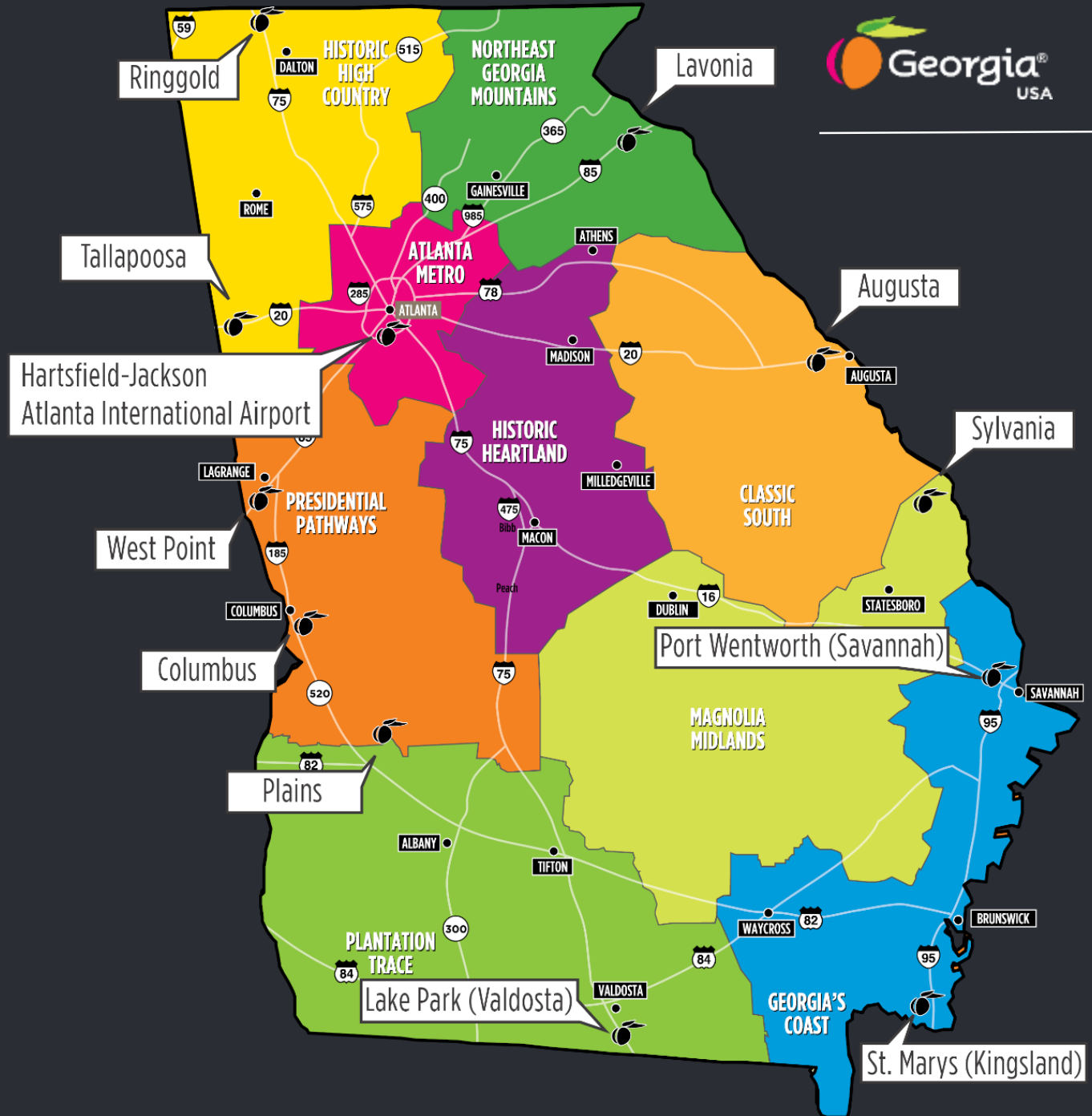
Lori Hennesy
902 Center Court
Douglas, Ga. 31533
M: 678.640.4342
lhennesy@georgia.org

Plantation Trace

Amanda Peacock
1709 Gornto Road
Suite A, Box 307
Valdosta, Ga. 31601
M: 404.615.2672
apeacock@georgia.org

The Coast

Cheryl Hargrove
PO Box 20463
St. Simons Island, Ga. 31522
P: 912.638.6078
M: 404.971.1559
chargrove@georgia.org



GLOBAL COMMERCE PROJECT ACTIVITY

Locations for FY18 to date

- 164 projects located
- \$2.46 billion investment
- 11,963 jobs created

New vs. Expansions

- Existing industry expansions have accounted for 77% of projects located to date
- Expansions have created over 6,400 jobs and \$1.3 billion investment to date

Outside the Metro Region

- 137 projects have located outside the 10-county Metro Atlanta region for FY18 to date
- These projects have created \$2.14 billion investment, or 87% of the total
- 55% of the FY18 jobs, or 6,583 total new jobs have been created outside of Metro Atlanta



Georgia[®]
USA

COMPETITIVE ADVANTAGES BUSINESS RESOURCES GEORGIA INDUSTRIES ABOUT US

ABOUT US / We Speak Business Blog / Article

03/01/2016

PROPER PEPPER: A CUT ABOVE YOUR AVERAGE CHEDDAR

Like 244 Tweet Pin It Share



By Ryan Waldrep, Assistant Director for Entrepreneur and Small Business Development

Nothing screams Southern cuisine like fried chicken, sweet tea, banana puddin' and pimento cheese. Ok, I know you're probably thinking of that pimento cheese that looks like wallpaper paste, but hang with me and

Contact GDEcD
For more information on Georgia's public-private business partnerships, contact the Georgia Department of Economic Development at 404.962.4000.

More About Georgia Benefits
Georgia's industry-specific Project Analysts are available to help you with a wide range of business needs:

- Site and building services
- Location data
- Community contacts and facilitation
- Cost environment analysis
- Coordination with state agencies

Recent Posts

- [An Award Winning Week for the Georgia Centers of Innovation](#)
- [How Georgia held the No. 1 state for business title for five consecutive years](#)
- [2017 Georgia Automotive Award Winners Named](#)
- [Georgia Delegation Celebrates Southeast U.S.-Japan Partnership](#)
- [Georgia Center of Innovation for Logistics Welcomes New Director](#)

Georgia.org/blog



Thrush Aircraft



THANK YOU!