



Dahlonega/Lumpkin County, Georgia

**Dahlonega Plateau
City of Dahlonega
University of North Georgia
Camp Frank D. Merrill
It's Pure Gold**

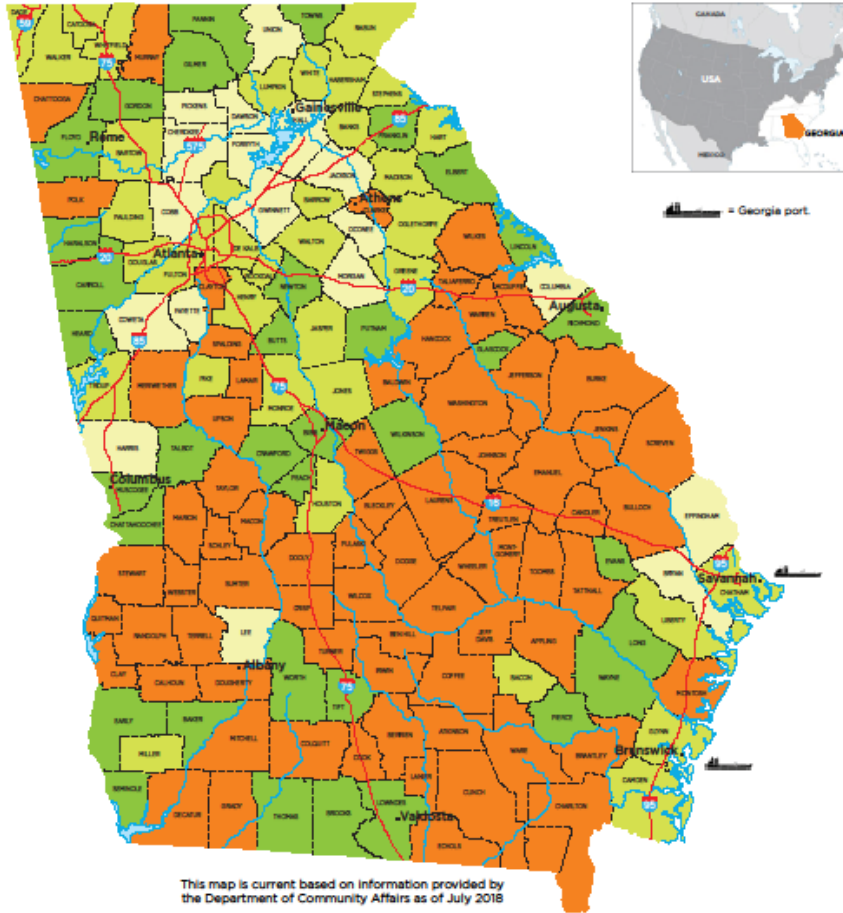
New Lumpkin County Manufacturing Companies in the past 2 years



ARCADIA
SUN • SHADE • SHELTER



GEORGIA 2019 JOB TAX CREDIT TIERS



TIER	JOB TAX CREDIT \$ (FOR 5 YEARS)	MIN. NEW JOBS	USE OF CREDITS**	CARRY FORWARD
1	\$4,000*	2	100% of tax liability - excess to withholding up to \$3,500	10 years
2	\$3,000*	10	100% of tax liability	10 years
3	\$1,750*	15	50% of tax liability	10 years
4	\$1,250*	25	50% of tax liability	10 years
MZ/OZ	\$3,500	2	100% of tax liability - excess to withholding	10 years
LDCT	\$3,500	5	100% of tax liability - excess to withholding	10 years

*Includes \$500 bonus for Joint Development Authority (JDA). Georgia counties can form partnerships that benefit companies with this \$500 Job Tax Credit bonus. The majority of counties are in a JDA. To confirm a county's status, please call 404.962.4931.

Tax credits are applied to Georgia corporate income taxes
 MZ= Military Zone
 OZ= Opportunity Zone
 LDCT= Less Developed Census Tract

Lumpkin – 3.3 % unemployment

17,015 labor force

16,459 employed

556 unemployed

\$21,814 per capita income

16.2% poverty rate

County is 283 square miles with 44% in National forest

DeKalb - 3.1% unemployment

401,436 labor force

387,144 employed

13,370 unemployed

\$30,517 per capita income

17.5% poverty rate

County is 271 square miles

Fulton - 3.6% unemployment

557,502 labor force

537,442 employed

20,060 unemployed

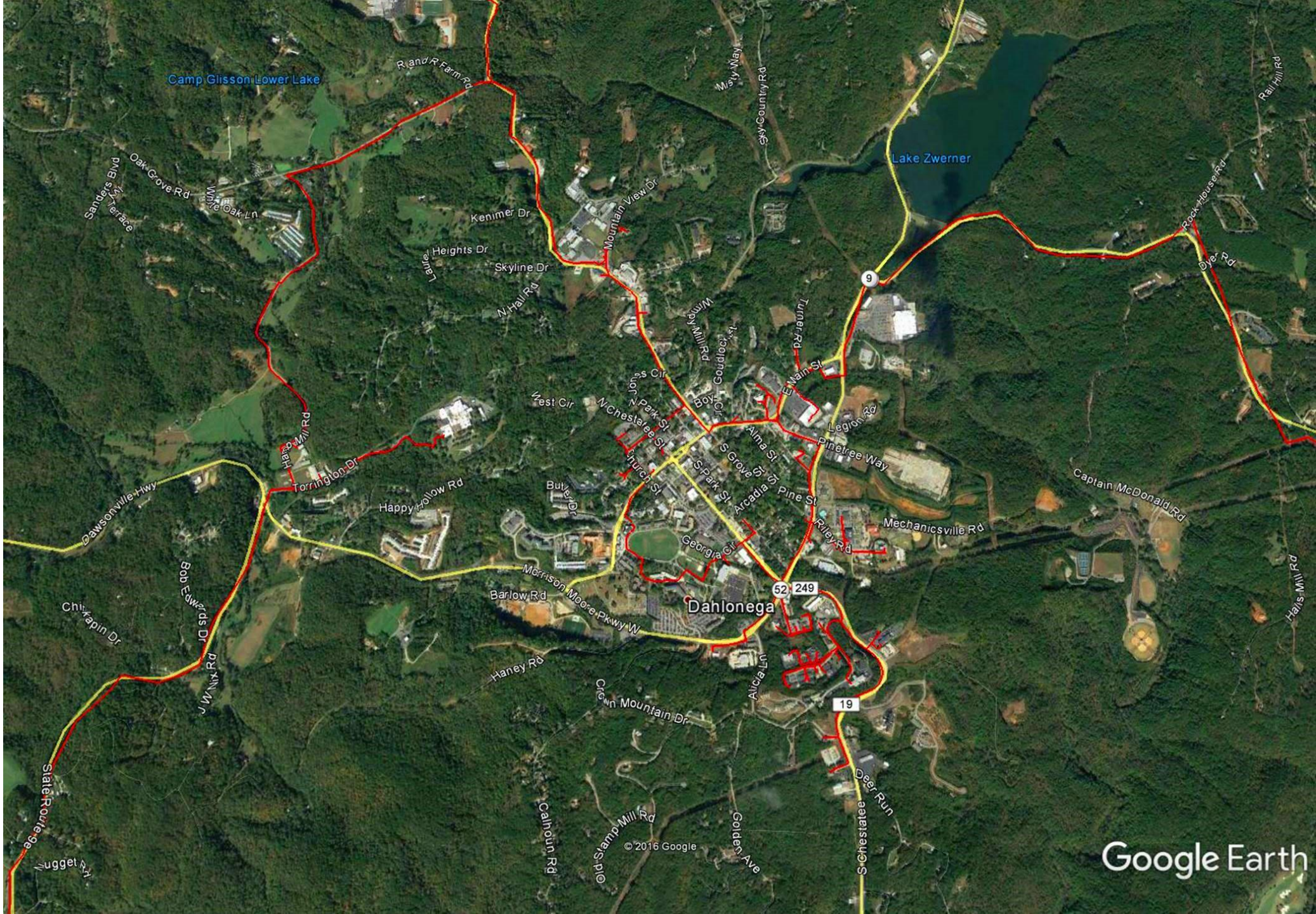
\$39,101 per capita income

16.0% poverty rate

County is 534 square miles

BROADBAND INFRASTRUCTURE





Camp Glisson Lower Lake

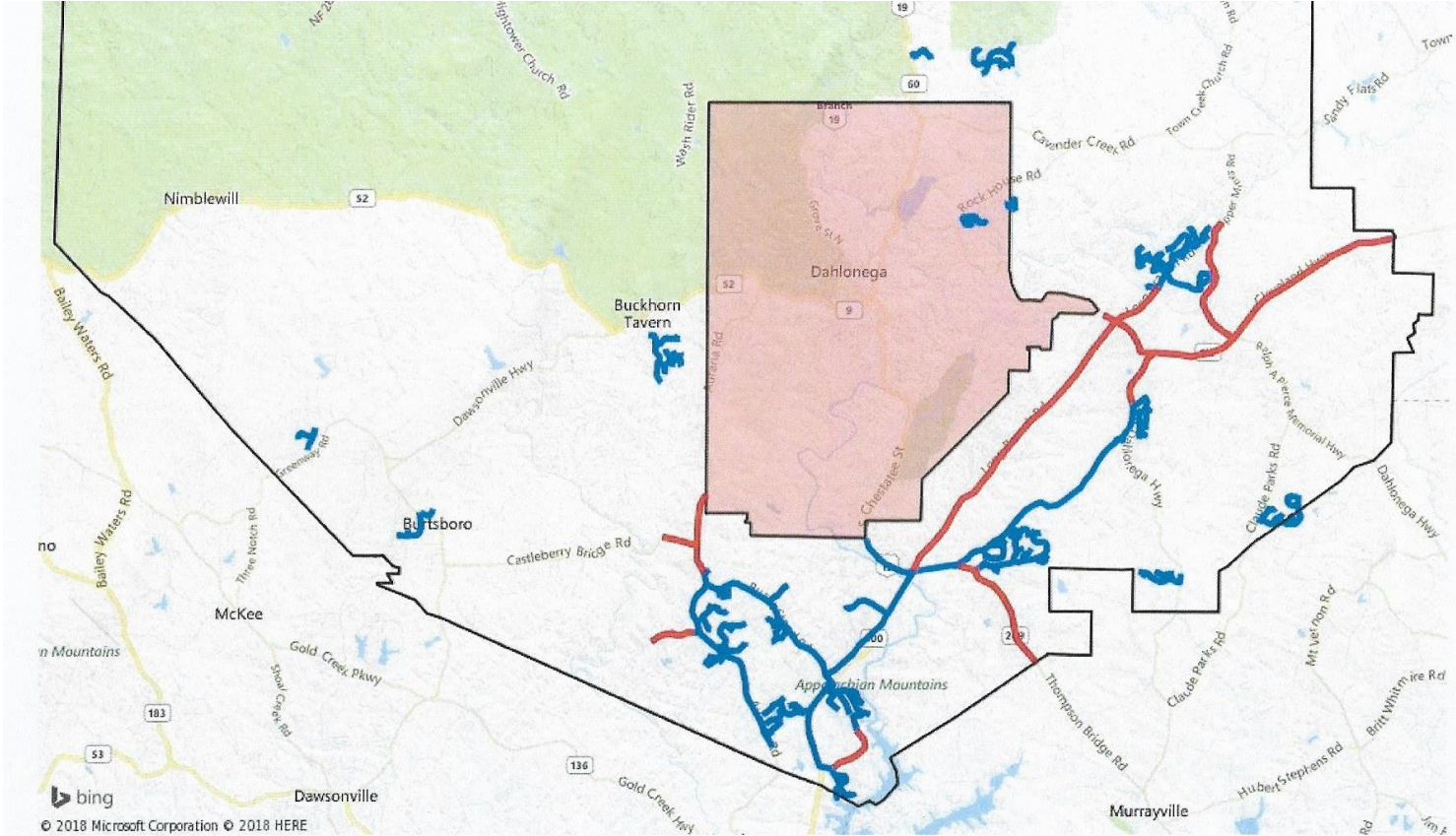
Lake Zwerner

Dahlonega

Google Earth

© 2016 Google

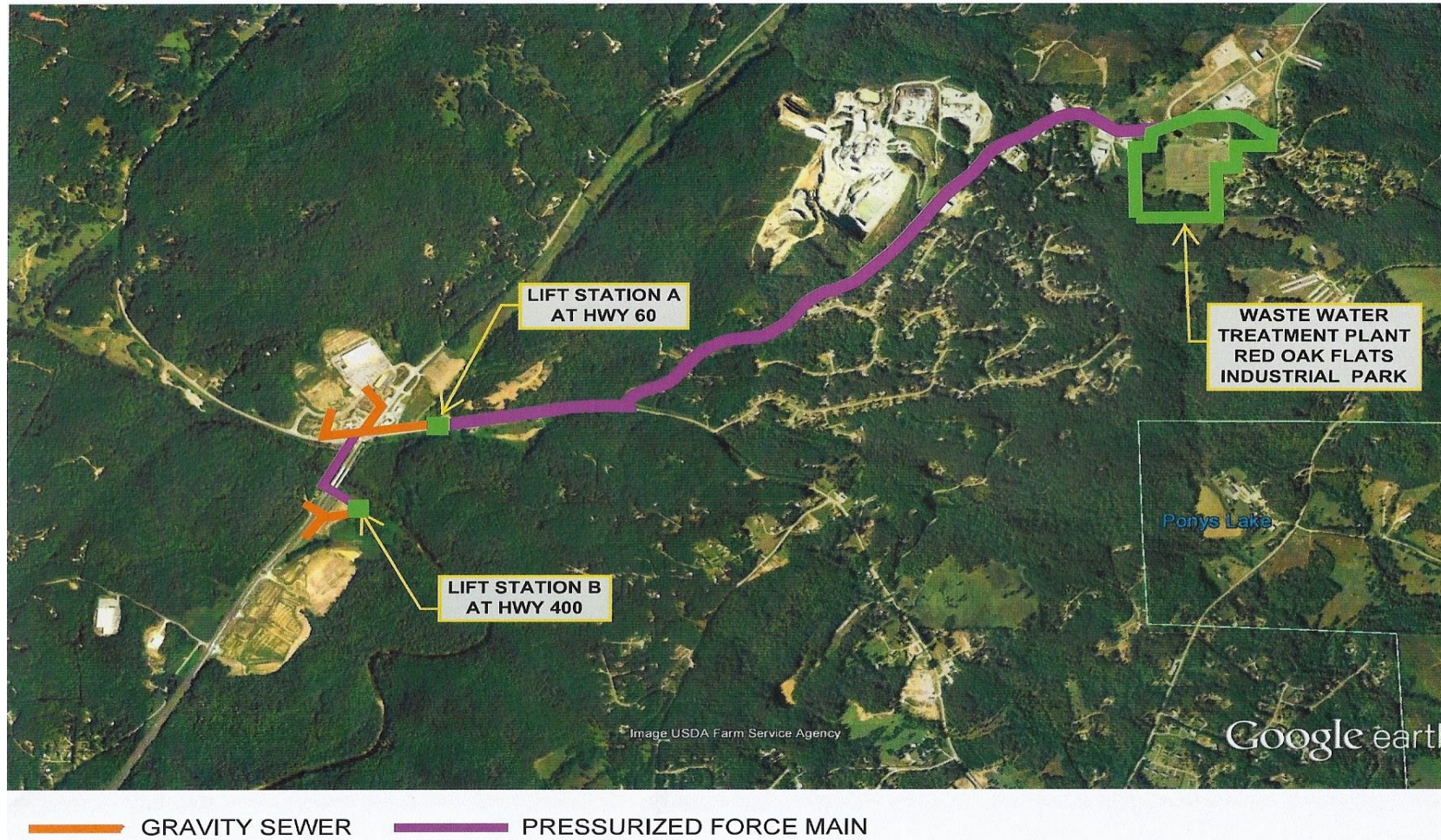
Water Infrastructure



LCWSA – Strategic Expansion of 400 Water System from 2018 – 2035 (Red Lines)

Sewer Infrastructure

LCWSA - EXISTING SEWER COLLECTION SYSTEM



What we need to be competitive

- **Support for infrastructure expansion**
- **Equitable tier system**
- **Assistance from state seeking business and industry that are a good fit for us**

Target Industries

- Small Manufacturing – topography limits our region to industries with a smaller footprint. Transportation limitations mean we need to seek businesses that are not dependent upon interstate or rail access.
- Technology- Data Centers, Corporate HQs, Research – with broadband expansion, technology industries would be a great option for us
- Health care – Equipment and services, Pharmaceuticals, Biotechnical