

# **Georgia Commission on Freight & Logistics**

**Rebecca M. Brewster  
President and COO  
American Transportation  
Research Institute**

# ATRI

**Trucking industry's not-for-profit  
research organization**

- **Safety**
- **Mobility**
- **Economic Analysis**
- **Technology**
- **Environment**

**[www.TruckingResearch.org](http://www.TruckingResearch.org)**

# Board of Directors





# Research Advisory Committee



# 2019 Top Industry Issues

1. Driver Shortage (1)
2. Hours-of-Service (2)
3. Driver Compensation (new)
4. Detention / Delay at Customer Facilities (new)
5. Truck Parking (5)
6. Driver Retention (3)
7. ELD Mandate (4)
8. CSA (6)
9. Transportation Infrastructure / Congestion / Funding (8)
10. Economy (10)

## CRITICAL ISSUES IN THE TRUCKING INDUSTRY – 2019



Presented to the  
American Trucking Associations

Prepared by  
The American Transportation Research Institute  
October 2019



950 North Glebe Road  
Arlington, VA 22203  
(703)838-1966  
[ATRI@trucking.org](mailto:ATRI@trucking.org)  
[TruckingResearch.org](http://TruckingResearch.org)



# 2019 Top Industry Issues

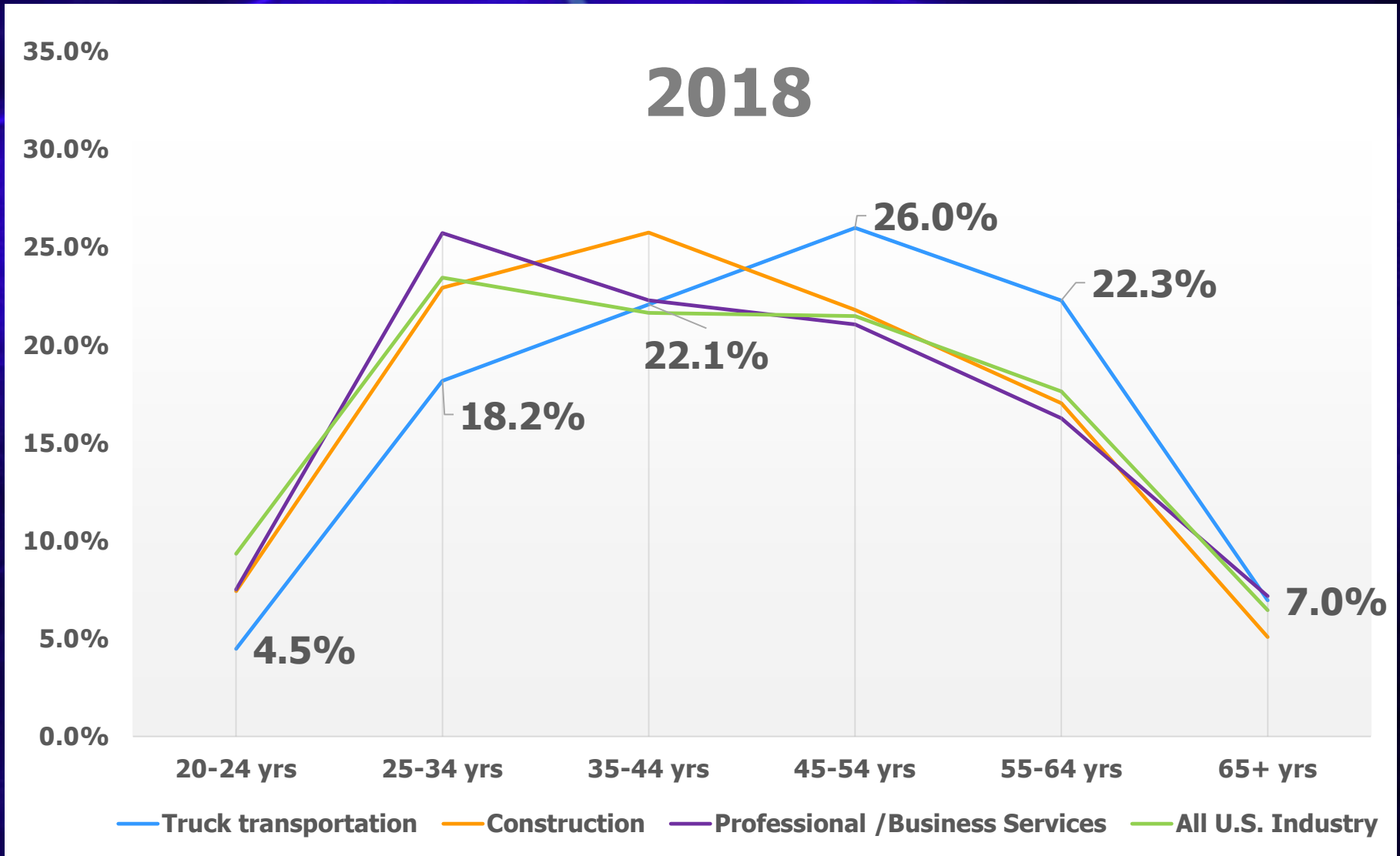
## Commercial Drivers

1. Driver Compensation
2. Hours-of-Service
3. Truck Parking
4. ELD Mandate
5. Detention / Delay at Customer Facilities
6. Speed Limiters
7. Driver Training Standards
8. Driver Distraction
9. Transportation Infrastructure / Congestion / Funding
10. Autonomous Truck Technology

## Motor Carriers

1. Driver Shortage
2. Driver Retention
3. Hours-of-Service
4. CSA
5. Transportation Infrastructure / Congestion / Funding
6. Detention / Delay at Customer Facilities
7. Economy
8. ELD Mandate
9. Insurance Cost / Availability
10. Tort Reform

# Truck Driver Age Demographics



# Detention Time Impacts

- **Multi-year analysis of detention impacts on industry safety and productivity**
- **Based on over 1,900 driver and motor carrier surveys collected in 2014 and 2018**



September 2019

Erin Speltz  
Research Analyst  
American Transportation Research Institute  
Minneapolis, MN

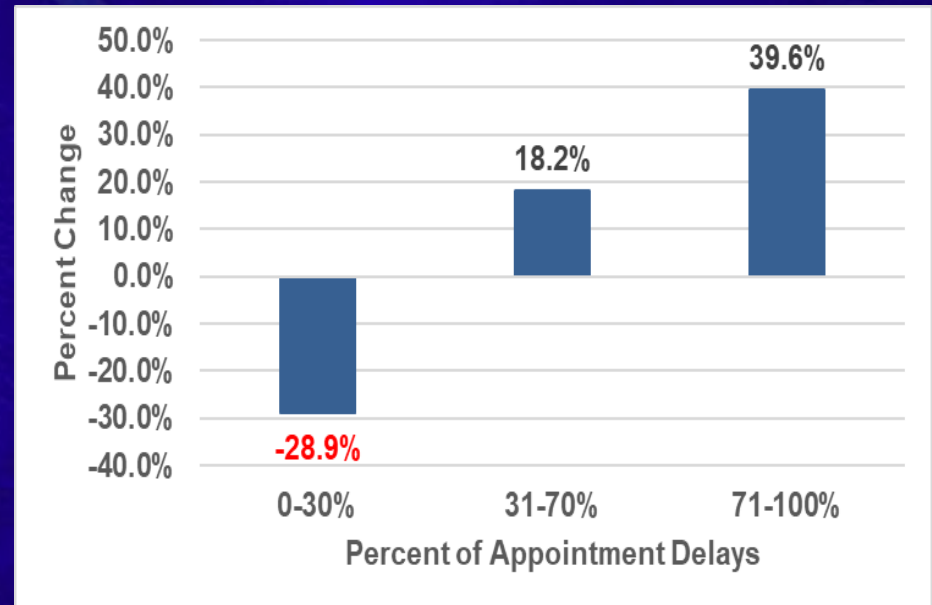
Dan Murray  
Senior Vice President  
American Transportation Research Institute  
Minneapolis, MN



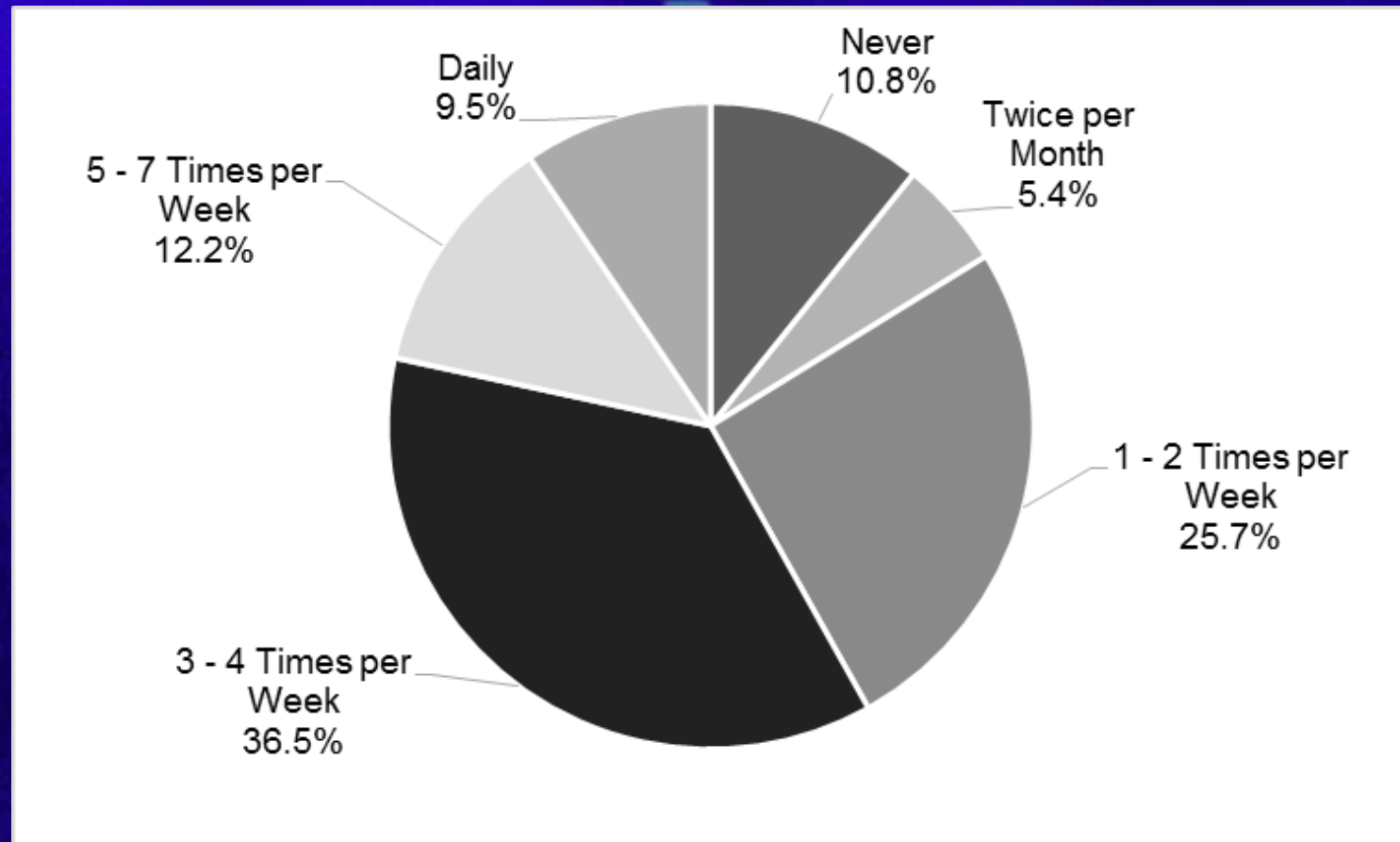


# Detention Getting Worse

- Between 2014 and 2018, drivers reported 27.4% increase in delays of 6+ hours
- Nearly 40% increase in drivers reporting majority of appointments delayed due to customer actions

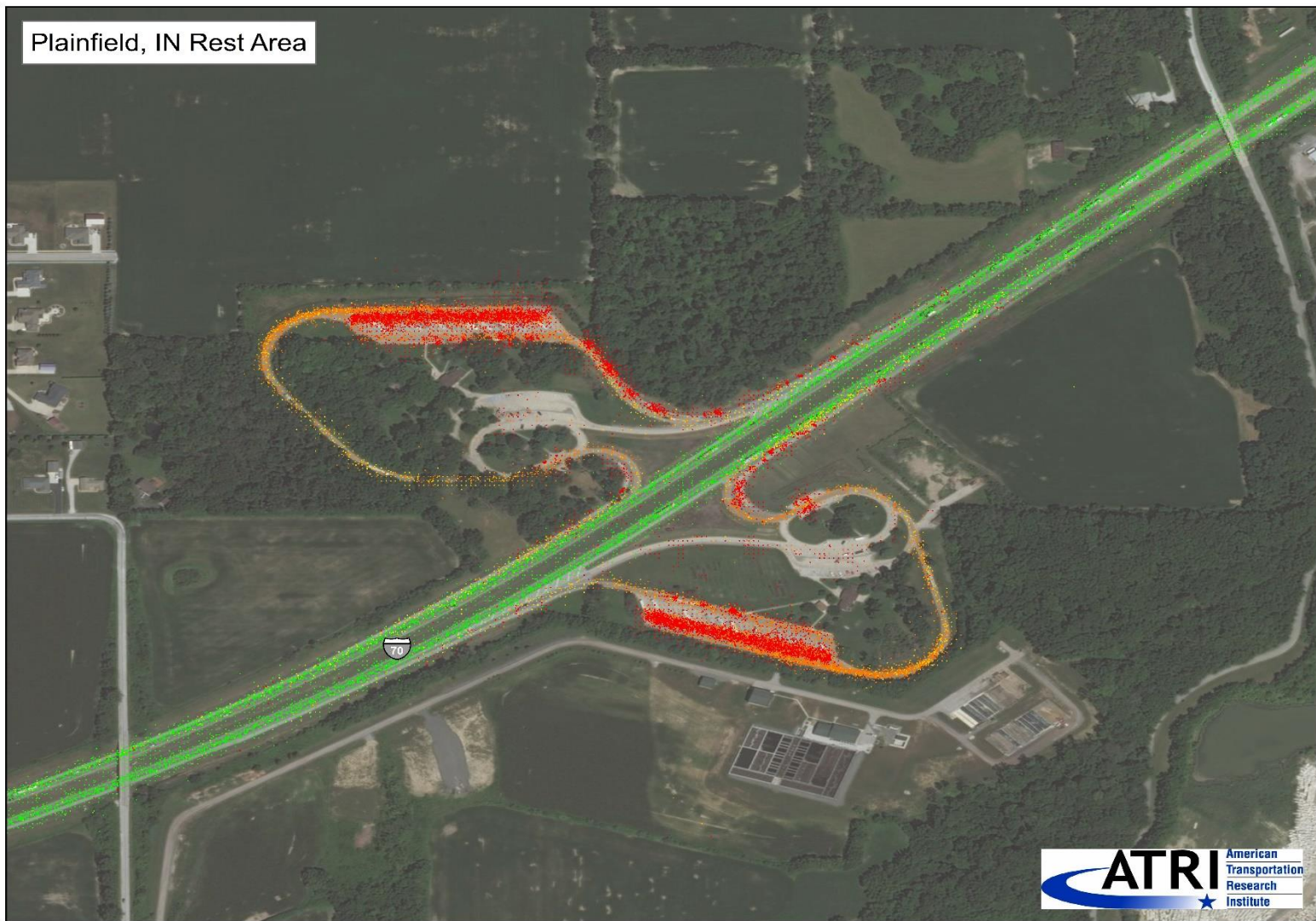


# Frequency of Unauthorized/Undesignated Parking



# No Vacancy

Plainfield, IN Rest Area





# Cost of Congestion

- Congestion on U.S. NHS cost trucking industry \$74.5B in 2016
- Lost productivity = 1.2 billion hours
  - ◆ Equates to 425,533 commercial drivers sitting idle for entire year

## Cost of Congestion to the Trucking Industry: 2018 Update

October 2018



Prepared by the American Transportation Research Institute



# Congestion Costs the Economy

ATRI research findings:



**\$74.5 billion**

Annual cost to the trucking industry as a result of congestion on the nation's highways



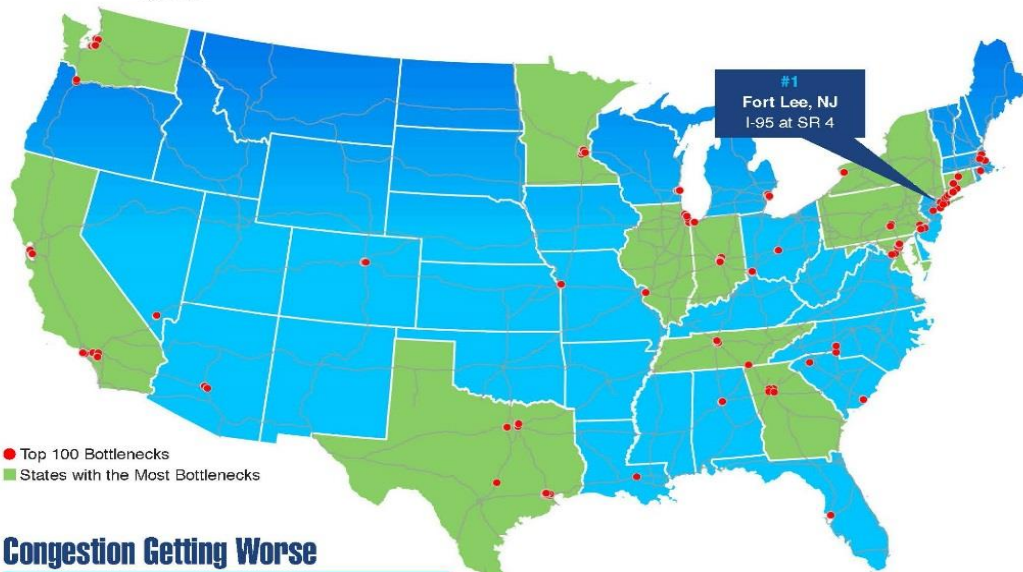
**1.2 billion**

Lost hours of trucking industry productivity due to congestion



**425,533**

Equivalent number of truck drivers sitting idle for an entire year



● Top 100 Bottlenecks

■ States with the Most Bottlenecks

## Congestion Getting Worse

▼ Year-over-year average truck speeds at the top 10 locations dropped by **nearly 9%**

## States with Most Bottlenecks

|            |             |           |           |
|------------|-------------|-----------|-----------|
| TX .....13 | GA .....6   | MN .....5 | IL .....4 |
| CA .....7  | WA .....6   | NY .....5 | IN .....4 |
| CT .....6  | MD/DC.....5 | PA .....5 | TN .....4 |



To view the top 100 list of truck bottlenecks along with detailed profiles for each location, please visit ATRI's website:  
**TruckingResearch.org**



The Nation's Top Truck

**BOTTLENECKS**

2019





# 2019 Top 10 Truck Bottlenecks

| Rank | Location                                 | Average Peak Speed | Y-o-Y Change in Average Peak Speed |
|------|--|--------------------|------------------------------------|
| 1    | Fort Lee, NJ: I-95 at SR 4               | 23.0               | -7.65%                             |
| 2    | Atlanta, GA: I-285 at I-85 (North)       | 22.9               | -7.35%                             |
| 3    | Atlanta, GA: I-75 at I-285 (North)       | 27.4               | -9.91%                             |
| 4    | Los Angeles, CA: SR 60 at SR 57          | 34.5               | 1.05%                              |
| 5    | Houston, TX: I-45 at I-69/US 59          | 24.2               | -9.46%                             |
| 6    | Cincinnati, OH: I-71 at I-75             | 36.2               | -7.42%                             |
| 7    | Chicago, IL: I-290 at I-90/I-94          | 17.6               | -16.74%                            |
| 8    | Nashville, TN: I-24/I-40 at I-440 (East) | 28.1               | -11.75%                            |
| 9    | Atlanta, GA: I-20 at I-285 (West)        | 38.3               | -5.06%                             |
| 10   | Los Angeles, CA: I-710 at I-105          | 26.8               | -12.35%                            |



# Questions?

**Rebecca Brewster**

**rbrewster@trucking.org**

**770-432-0628**

**www.TruckingResearch.org**



**@Truck\_Research**

**@ATRIPREZ**