



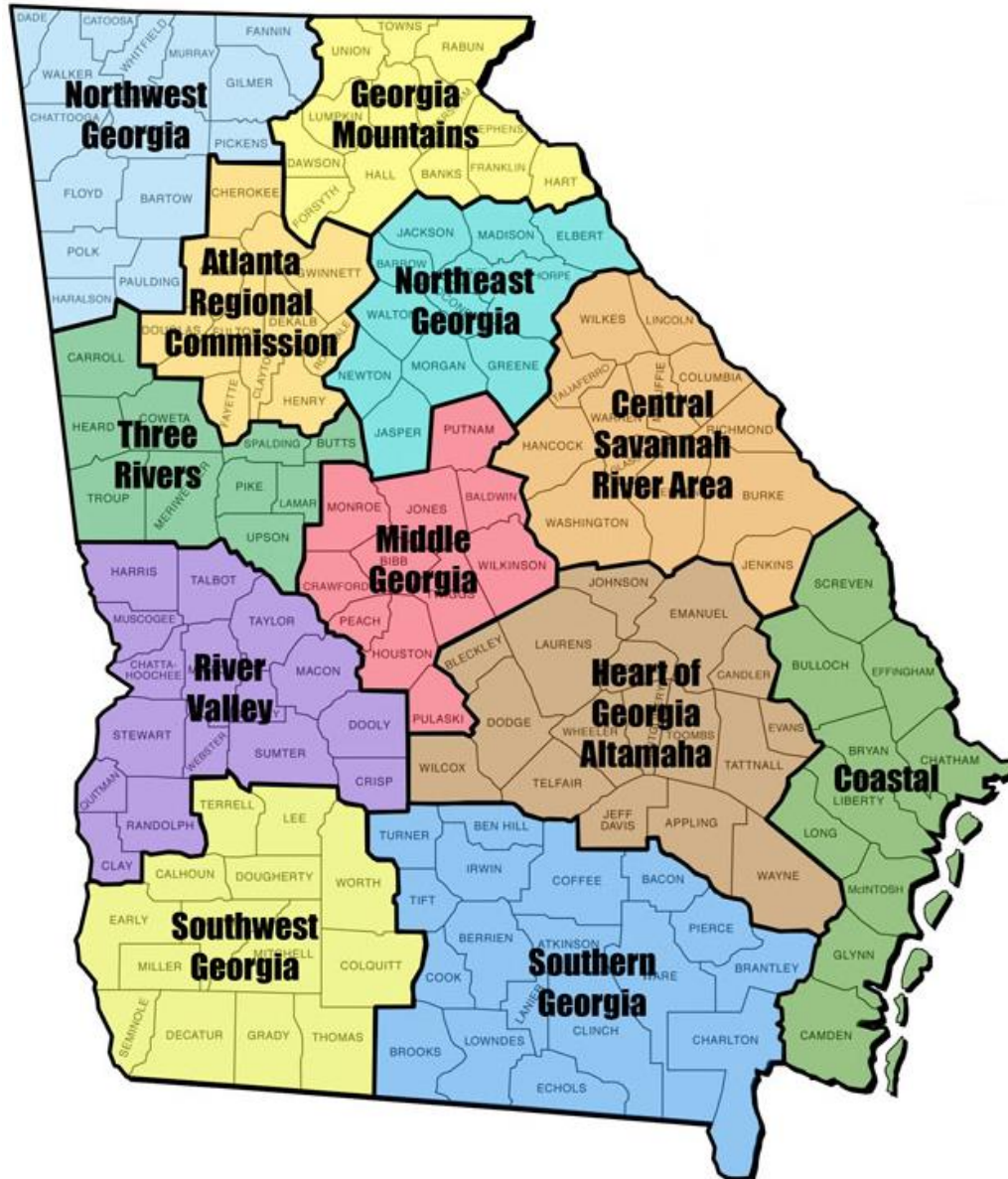
Georgia[®] Department of



Community Affairs



Georgia's 12 Regional Commissions



Enabling legislation

- “Regional commissions are created and established as public agencies and instrumentalities of their members”
O.C.G.A § 50-8-32
- Commissions shall:
 - Function as planning entity
 - Review applications from within the region for federal, state or agency grants or loans
 - Promote regional planning and development

Regional Commission services

- **Planning**
 - Comp plans
 - Transportation plans
 - GIS services
- **Plan implementation/
grant writing**
(and administration)
- **Local government
assistance**
 - Research & analytics
- **Champion regional
cooperation**
- Aging services
- Regional transportation
- Workforce development
- Small business lending
- Demographics / Census data affiliate

Issue – Perception vs. Reality

- Some: “I don’t get anything out of my Regional Commission”
- Overall: Satisfaction rates, based on member surveys:

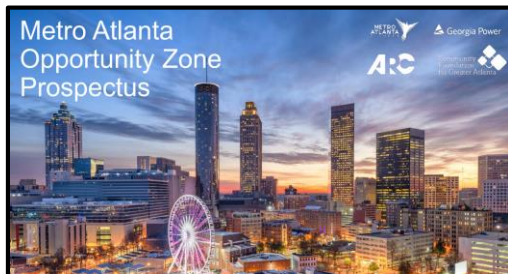
	Metro Atlanta	CSRA	Coast	GA Mtns*	HOGA	Middle GA*	NE GA*	NWGA	River Valley*	South GA	SW GA*	Three Rivers*
2017	92%	84%	75%	91%	94%	99%	87%	94%	87%	92%	89%	88%
2016	91%	85%	78%	85%	91%	96%	91%	92%	91%	96%	93%	80%
2015	93%	85%	75%	90%	91%	98%	94%	90%	89%	96%	84%	82%

Regional planning leadership

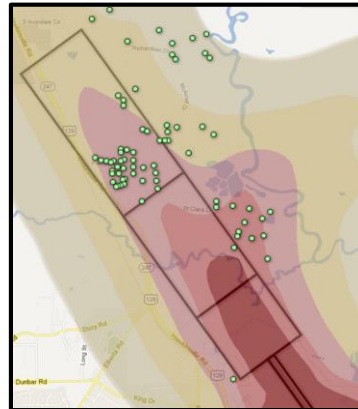
Bear Creek Reservoir (water resource planning)



Metro OZ Prospectus (community planning)



Encroachment Plan (BRAC planning)



Regional Transportation Plan

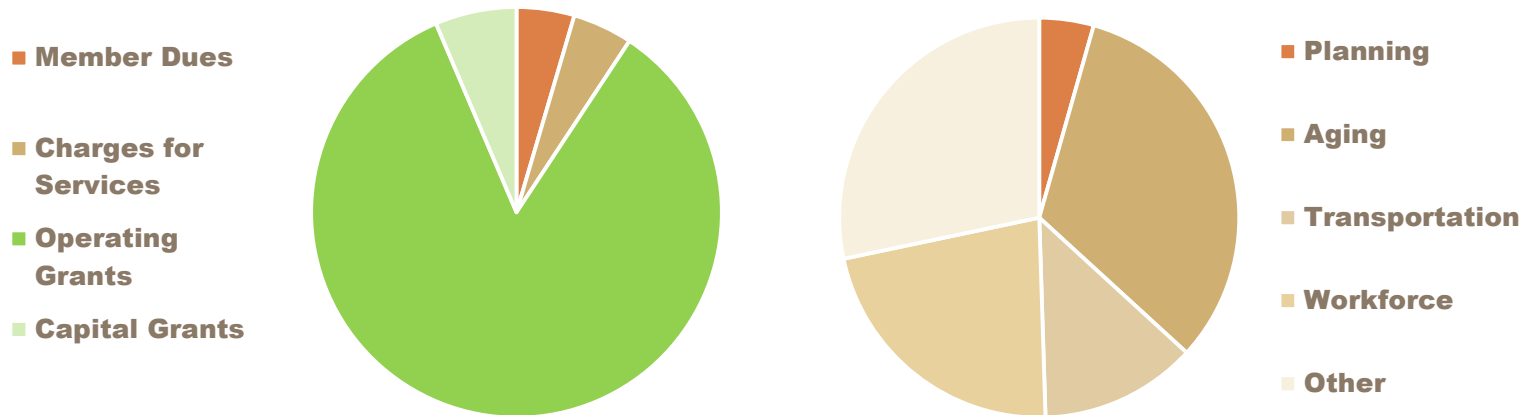


Comprehensive Plan



Funding

- Operating budgets range from \$5.7 to 84 million
 - ~5% dues
 - Reimbursement-based business model – cash flow management
- Member dues provide base funding to match operating grants



Governance

Regional Commissions are governed by Councils, which have powers to:

- Appoint and remove executive director;
- Establish committees;
- Adopt annual work program;
- Adopt annual budget;
- Determine policies and programs to implement and to operate the regional commission; and
- Other general powers enumerated in §50-8-35.

Regional Councils currently range from 35-60 members.



Georgia[®] Department of



Community Affairs

