



# Georgia Broadband Deployment Initiative



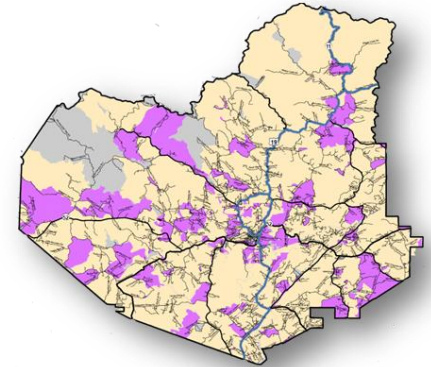
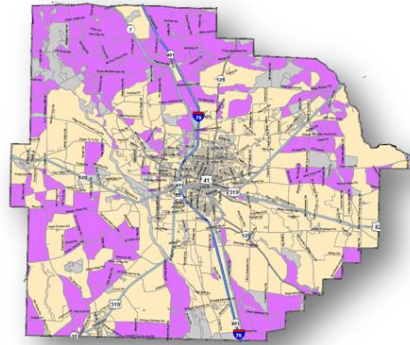
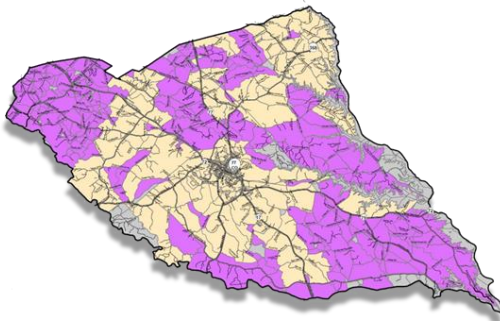
# Mapping

## Elbert Co.

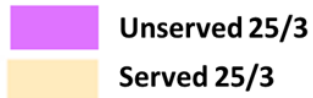
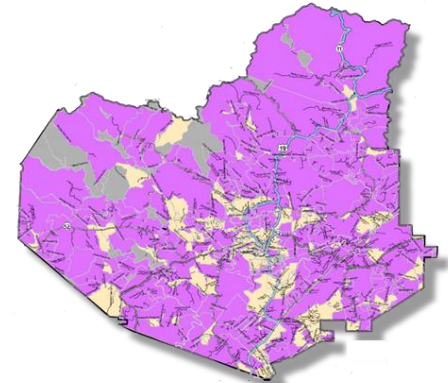
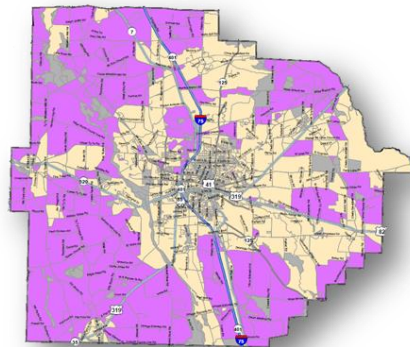
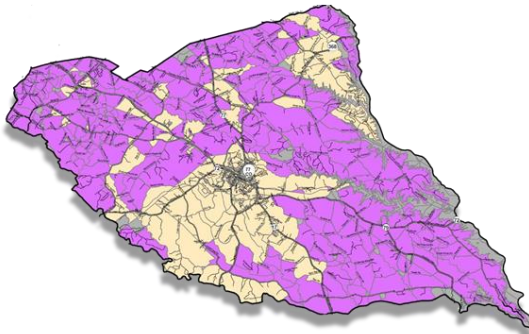
## Tift Co.

## Lumpkin Co.

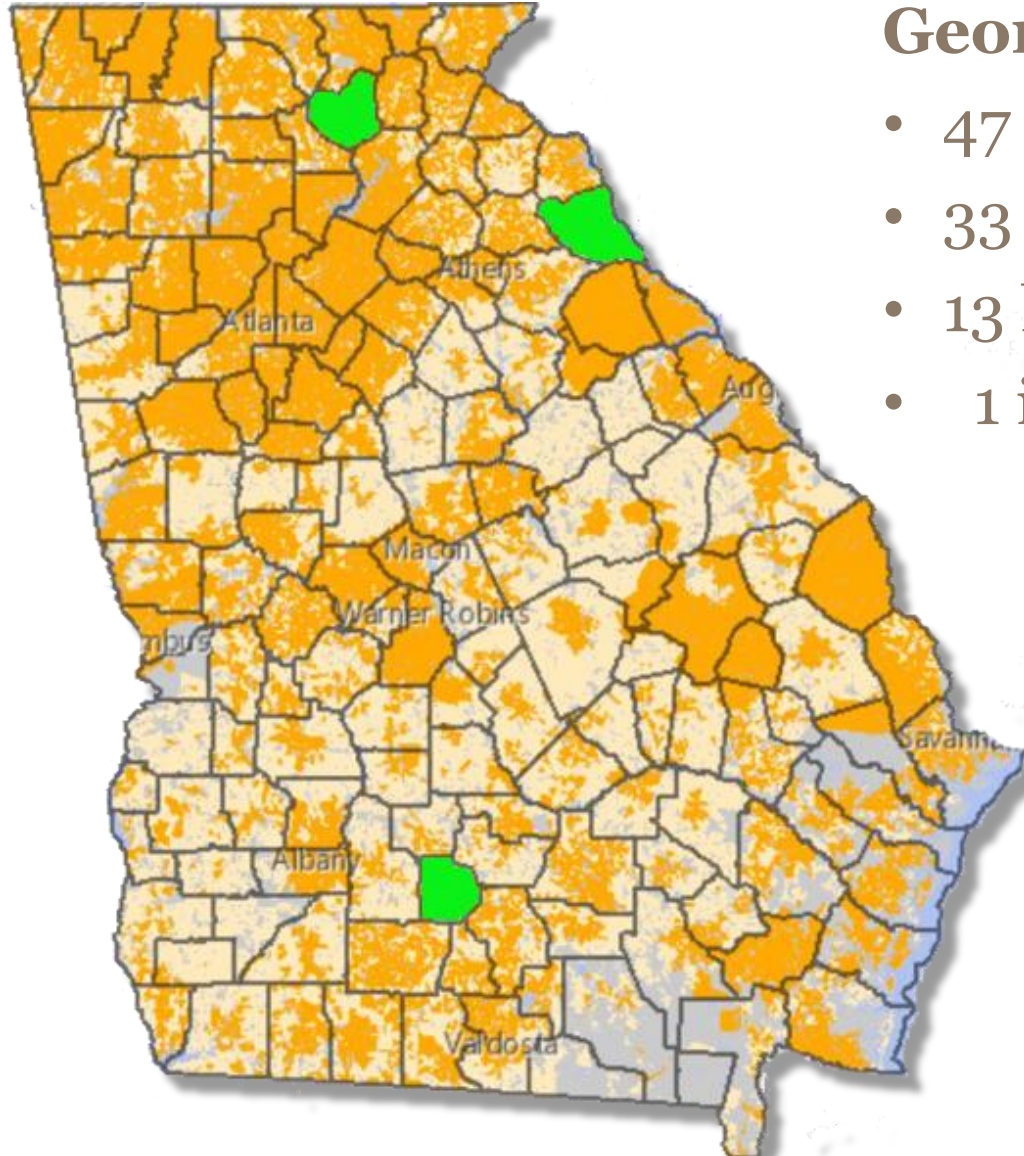
FCC  
Map



Georgia  
Map



# Mapping



## Georgia Mapping Project

- 47 Retail Providers
- 33 have submitted data
- 13 have committed
- 1 is considering

### FCC Map

Served & Unserved Areas

- Served
- Unserved
- Unpopulated



# Other SB402 initiatives

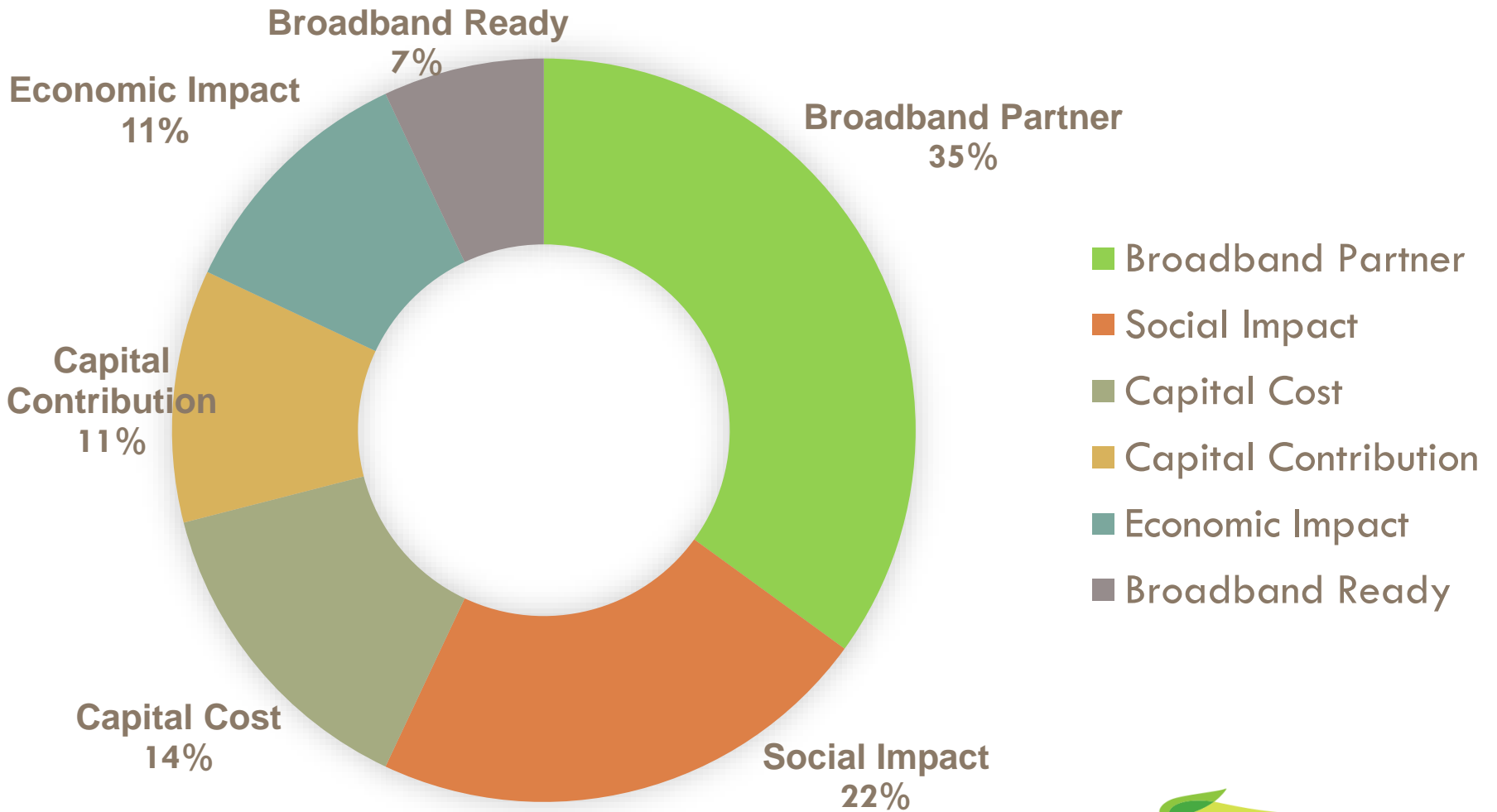
118  
jurisdictions  
have adopted  
plans that  
include a  
Broadband  
Planning  
Element

Aldora	Carlton	Fort Gaines	Lamar Co.	Norwood	Stonecrest
Alto	Cedartown	Gillsville	Lee Co.	Ocilla	Sugar Hill
Arabi	Clarkesville	Girard	Leesburg	Oconee Co.	Suwanee
Aragon	Clay Co.	Gordon	Lexington	★ Oglethorpe Co.	Taylor Co.
Arnoldsville	Cohutta	Grantville	Lilburn	Perry	Temple
Avera	Columbus- Muscogee	Grayson	Locust Grove	Pine Mountain	Tignall
Ball Ground	Comer	Gwinnett Co.	Long Co.	Polk Co.	Tunnel Hill
Banks Co.	Cordele	Habersham Co.	Louisville	Portal	Varnell
Barnesville	Crawford Co.	Hamilton	Ludowici	Rayle	Vidette
Bartow Co.	Crisp Co.	Hampton	Lula	Register	Wadley
Bluffton	Dacula	Harris Co.	Madison	Reynolds	Waleska
Blythe	Dalton	Henry Co.	Maxeys	Rockmart	Warren Co.
Bowman	Danielsville	Hephzibah	McDonough	Roswell	Warrenton
Brooklet	Dawson	Homer	Metter	Sardis	Washington Co.
Buford	Dawsonville	Ila	Midville	Shiloh	Waverly Hall
Bulloch Co.	Demorest	Irwin Co.	Milner	Smithville	Waynesboro
Burke Co.	Douglasville	Jefferson	Morrow	Snellville	Whitesburg
Butler	Duluth	Jefferson Co.	Mount Airy	Sparta	Whitfield Co.
Camak	Forest Park	Keysville	Newborn	Stapleton	Wilkes Co.
Canton			Norcross	Statesboro	Wrens

★ 1st Broadband Ready Community Designation



# Grant program



# Grant program – technical assistance

1. Social Impact  
2. Economic Impact

Mapping

3. Project Capital Cost  
4. Capital Contribution

Cost Model

5. Broadband Partner  
6. Local Government

Identifying  
Partner



Georgia<sup>®</sup> Department of



# Community Affairs

