

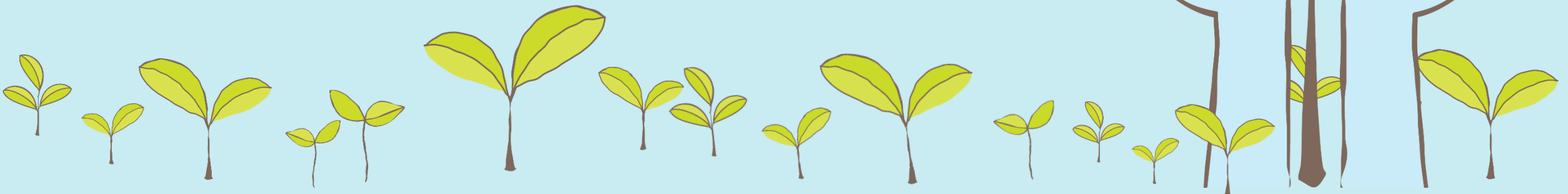


# Hillside

---

Behavioral Health Innovation And Reform Commission  
Hospital And Short-Term Care Subcommittee

*Healing and Hope for Children and Families*



# Introductions

---



**Emily Acker, MSA**

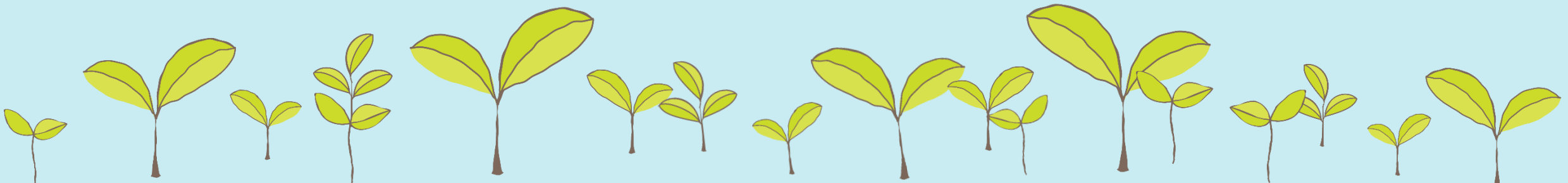
*President and CEO, Hillside*



**Amy Greenblatt**

*MPH, RN – Ph.D. Candidate, Emory School of Nursing*

*Chief Scientist, Hillside*



# The Mental Health Epidemic

physical abuse

TRAUMA

Anger Management

SUBSTANCE ABUSE

family  
conflict

ANXIETY

communication  
issues

Academic Struggles

DEPRESSION

POVERTY

self-injury

SEXUAL ABUSE

*LACK OF SELF-ESTEEM*

Suicide

EMOTIONAL

BULLYING

DYSREGULATION

COVID



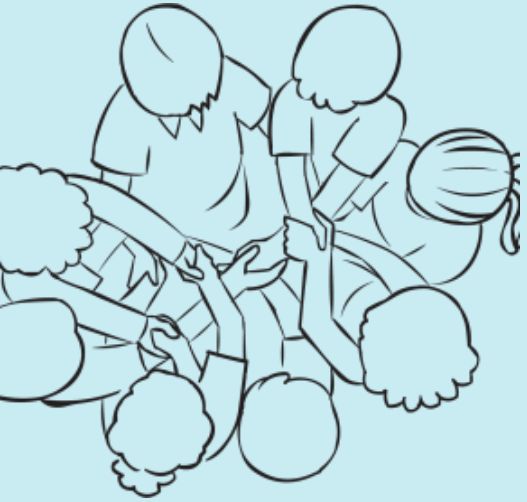
# Georgia's Available Levels of Care

---

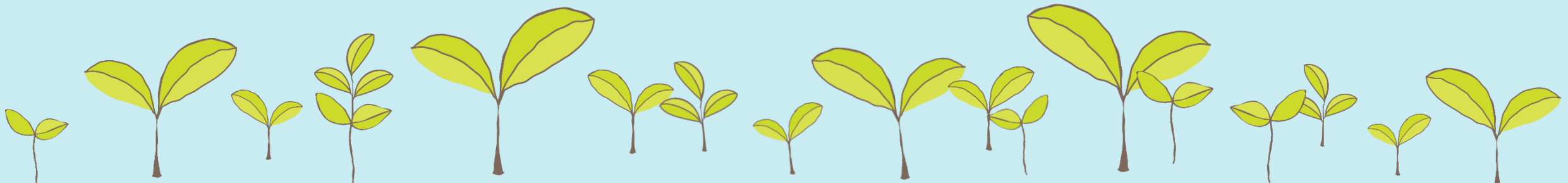


# Who We Serve

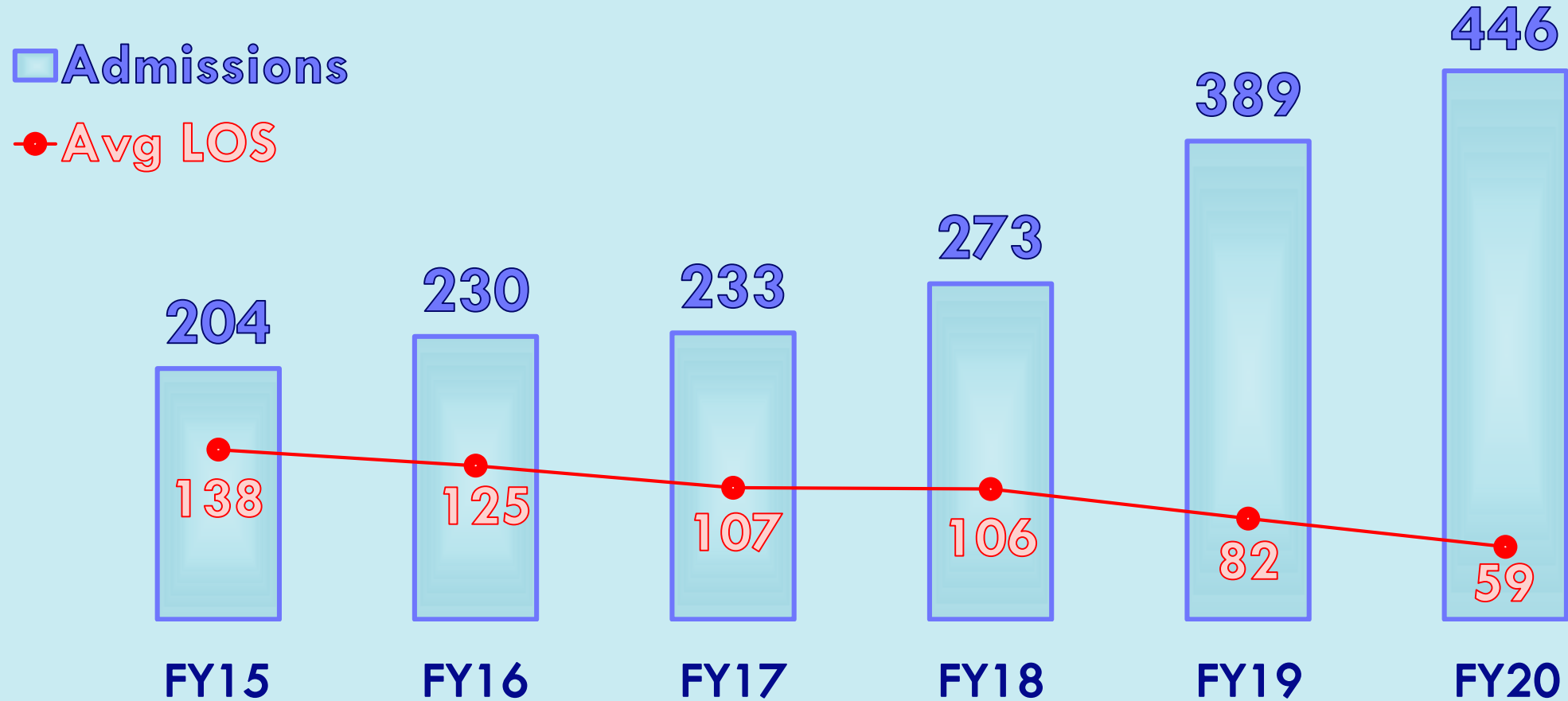
## Clients admitted in 2020



- Average # of prior hospitalizations: 3
- Average # of suicide attempts: 2
- 80% have 2+ diagnoses

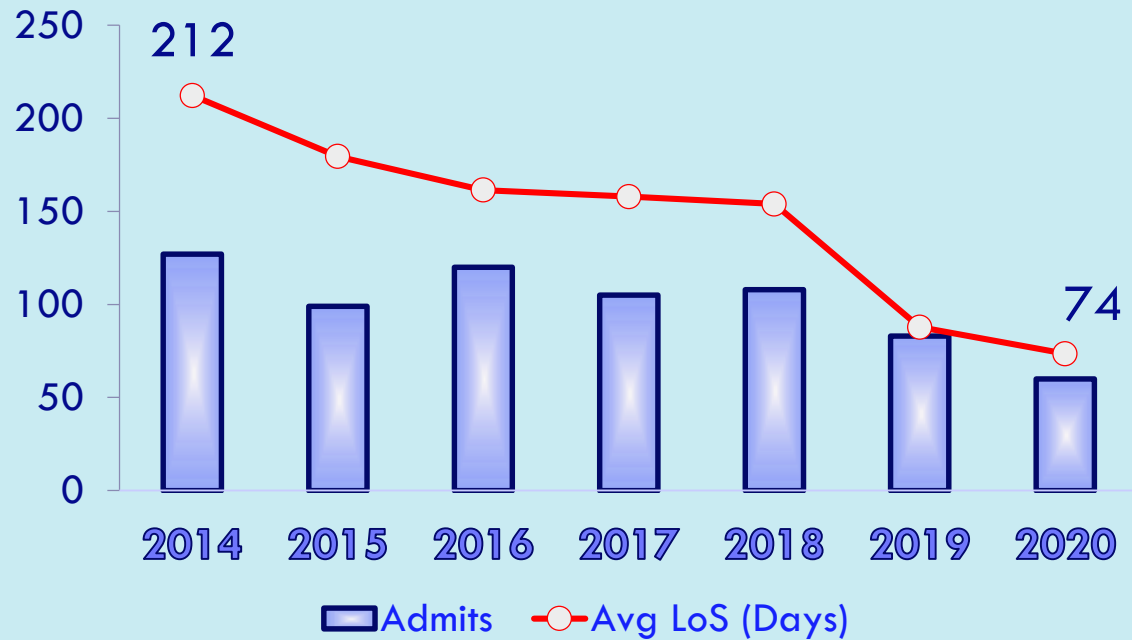


# Admissions & Avg Length Of Stay

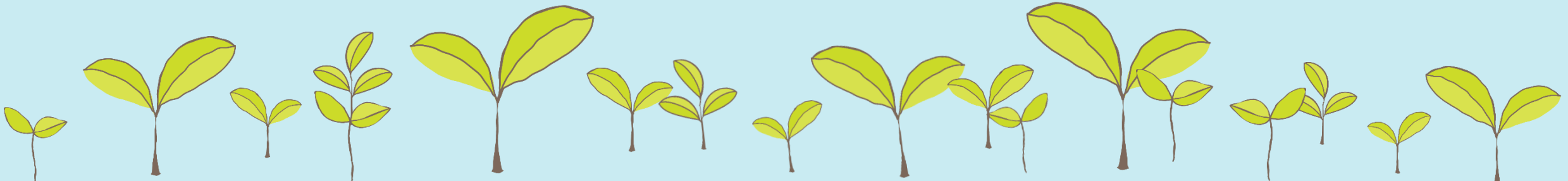
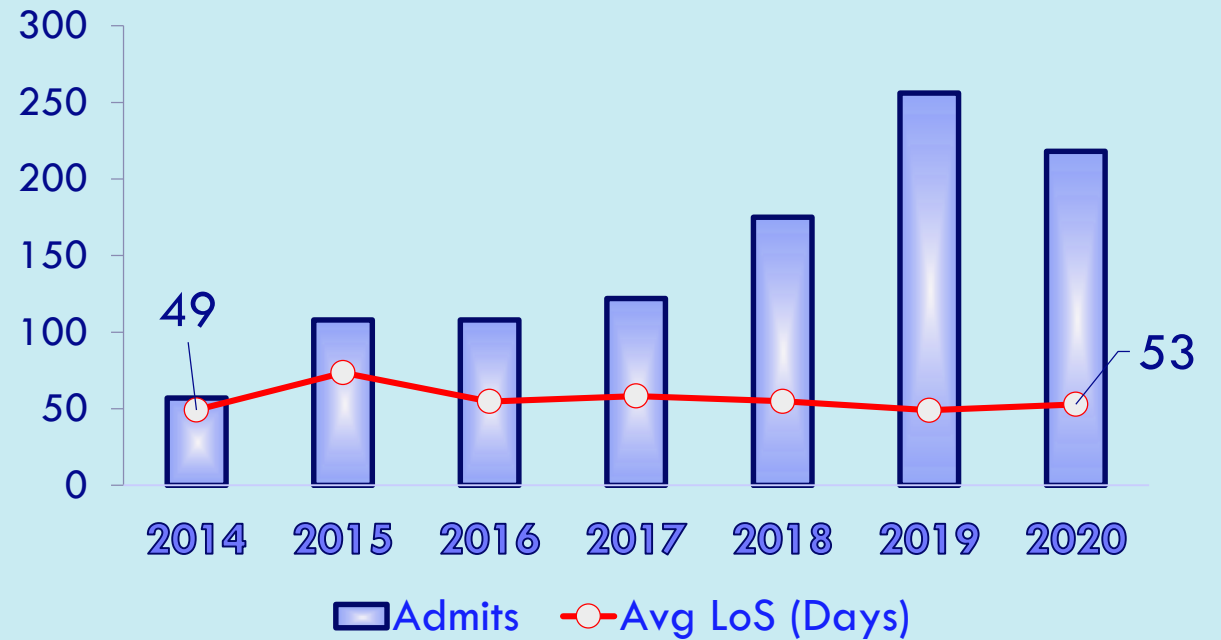


# Admissions & LOS (by Funder)

## CMO/Medicaid Data



## Commercial Insurance Data





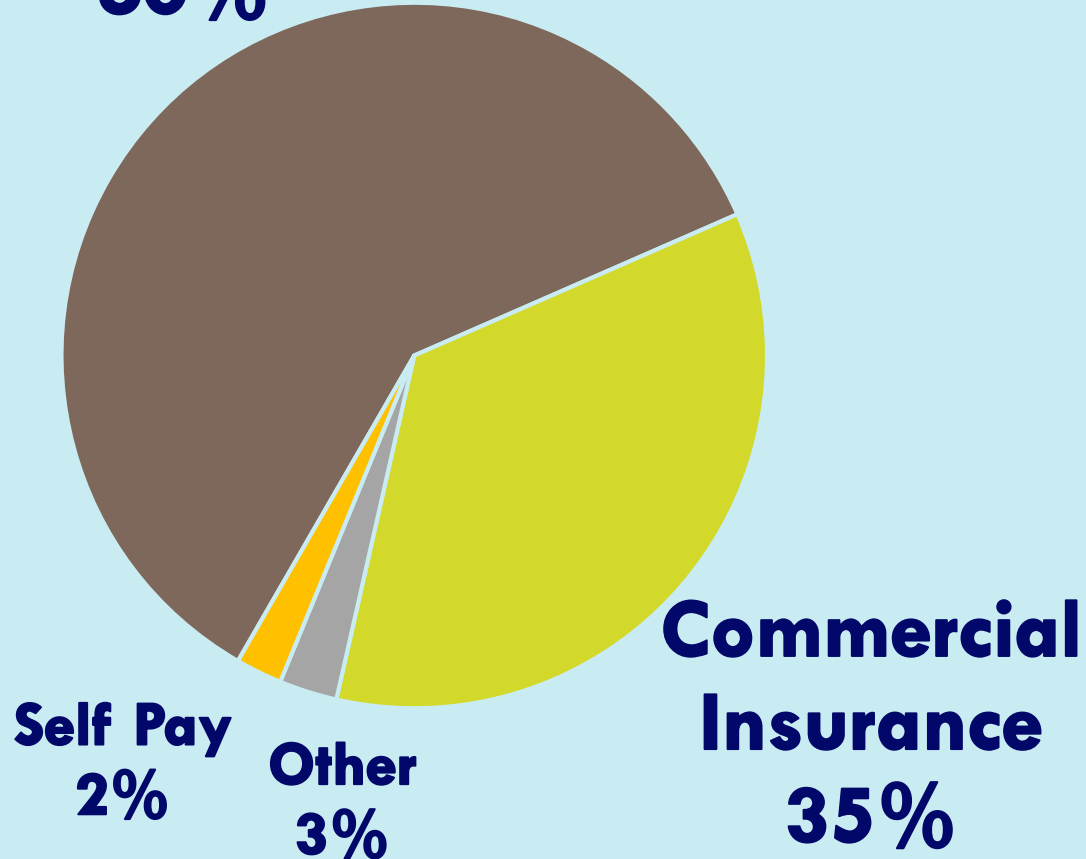
# Admissions By Funding Source

**FY 2014**

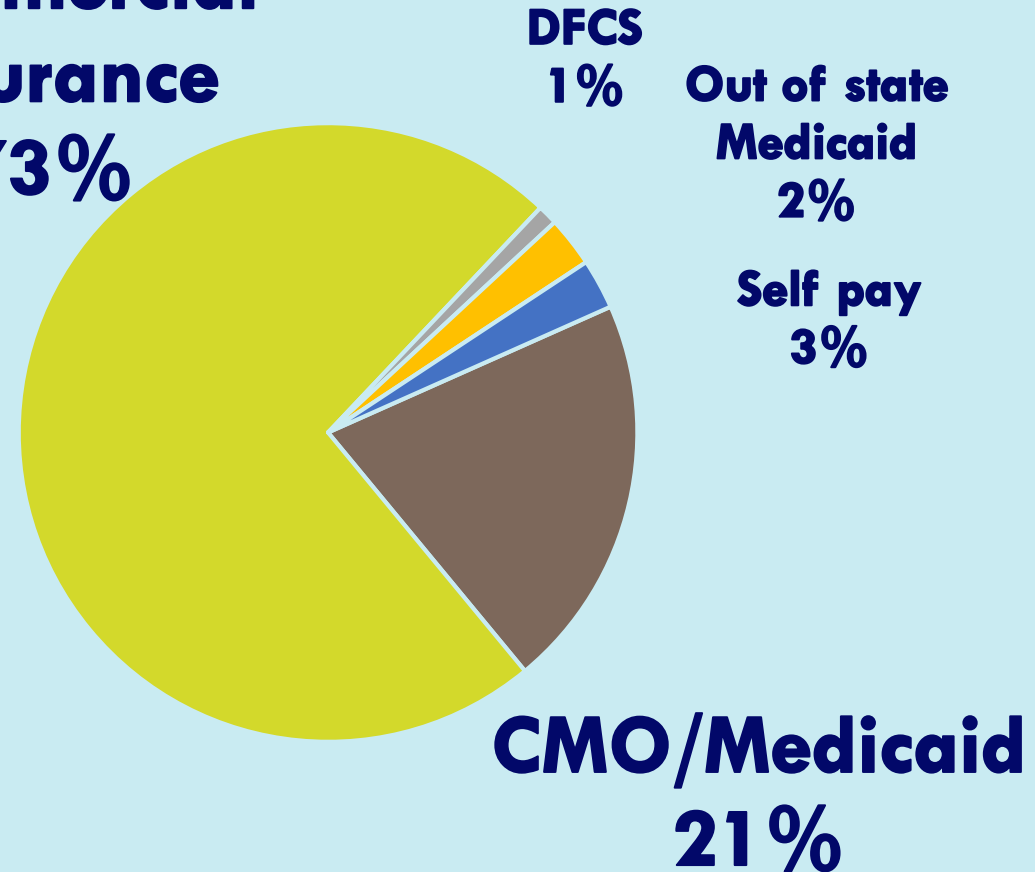


**FY 2019**

**CMO/Medicaid  
60%**



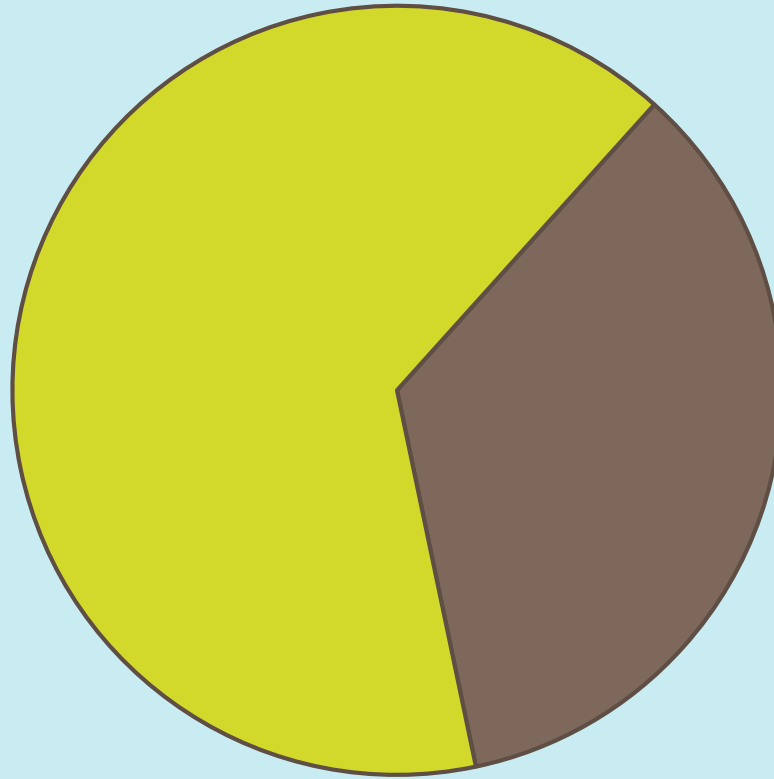
**Commercial  
Insurance  
73%**





# Funding Denials

**CMO/Medicaid  
65%**



**Commercial  
Insurance  
35%**



# Rose's Journey

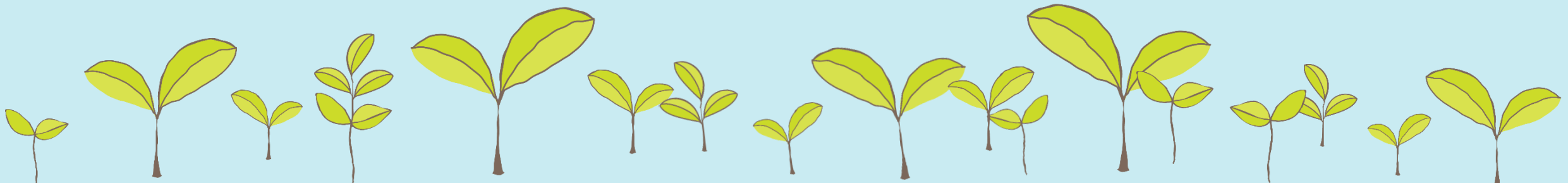
---

- 13 year-old female
- History of physical & sexual abuse, neglect, and sex trafficking
- 15 acute hospitalizations
- Admission to PRTF from Apr 2019 – Aug 2019
- Transition to foster care home for 1 year
- 4 acute hospitalizations within 4 months
- Extensive process required to readmit Rose to PRTF



# Program Evaluation Process

- Data is collected from all adolescent clients every two weeks
- 7 Evaluation instruments selected
- Current data set includes over 500 clients
- Post Discharge Outcomes

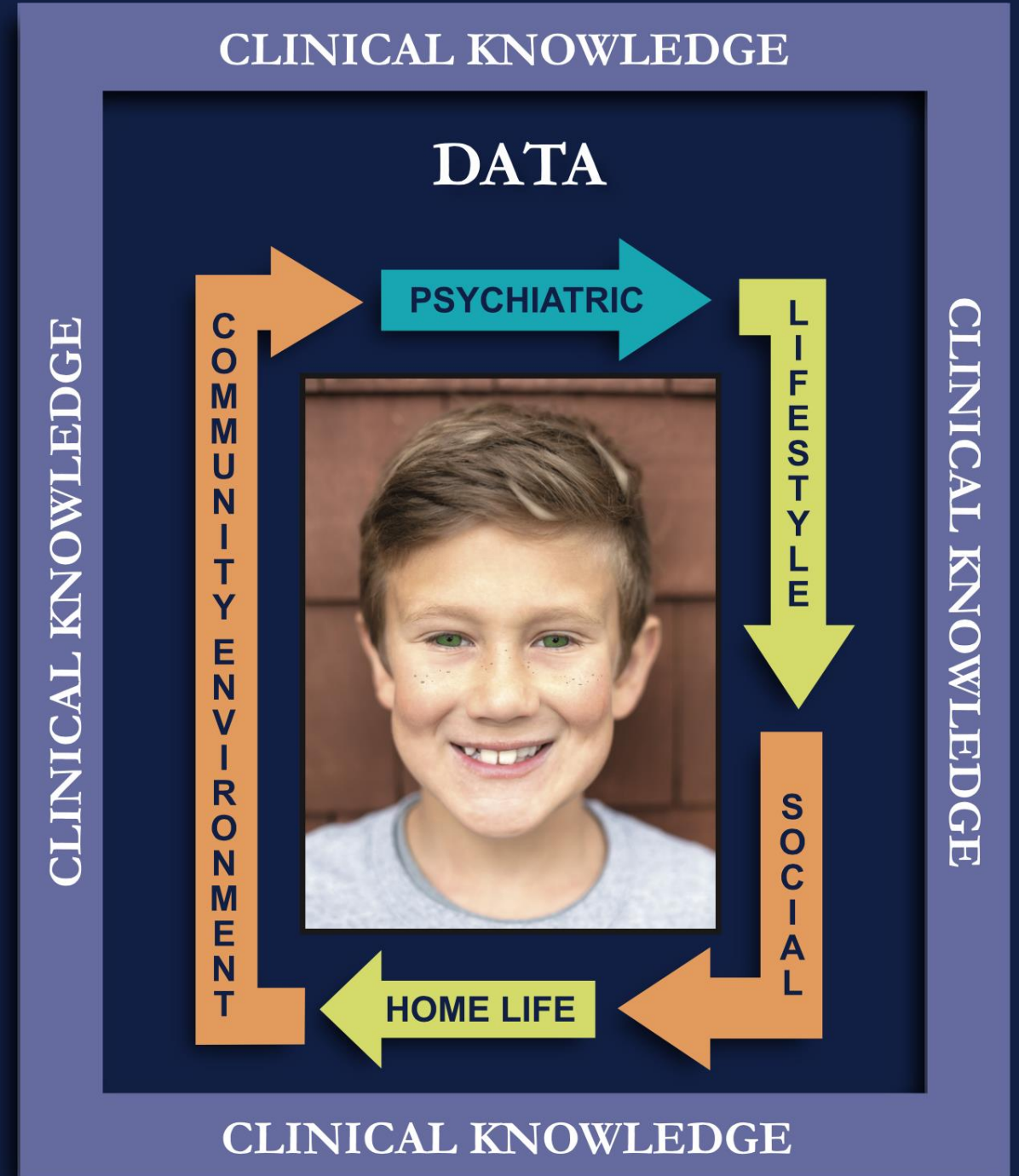
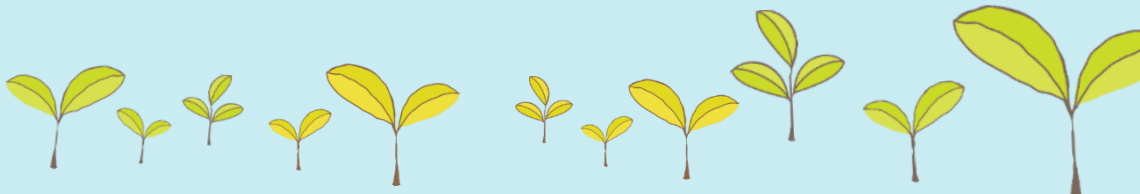


# Data Utilization

## EXAMPLE:

Modeling - What can be expected when treating clients based on data from children with similar features?

- Informs appropriate duration of treatment



# External Barriers to Treatment

- Complicated application and prior authorization practices
- Arbitrary medical necessity criteria for admission
- Obscure medical necessity criteria for continued stay
- Lack of understanding about PRTF's role in the continuum of care

