



**GEORGIA
FORESTRY
ASSOCIATION**

Andres Villegas
President & CEO
Georgia Forestry Association

**GEORGIA HOUSE OF REPRESENTATIVES
RURAL DEVELOPMENT COUNCIL
OCTOBER 24, 2022**



AMENDMENT A VIDEO



OVERVIEW



CHARLES HILL



PARKER WILLIAMS



TOBEY MCDOWELL



JUSTIN MAXWELL



JAMES FAULK

CLICK TO PLAY VIDEO

<https://vimeo.com/georgiaforestry/download/735983764/77ee3d9534>

THANK YOU CHAIRMAN WATSON AND CHAIRMAN WALKER !!

HOUSE BILL 997

Equity in Ad Valorem Taxes for Logging Equipment

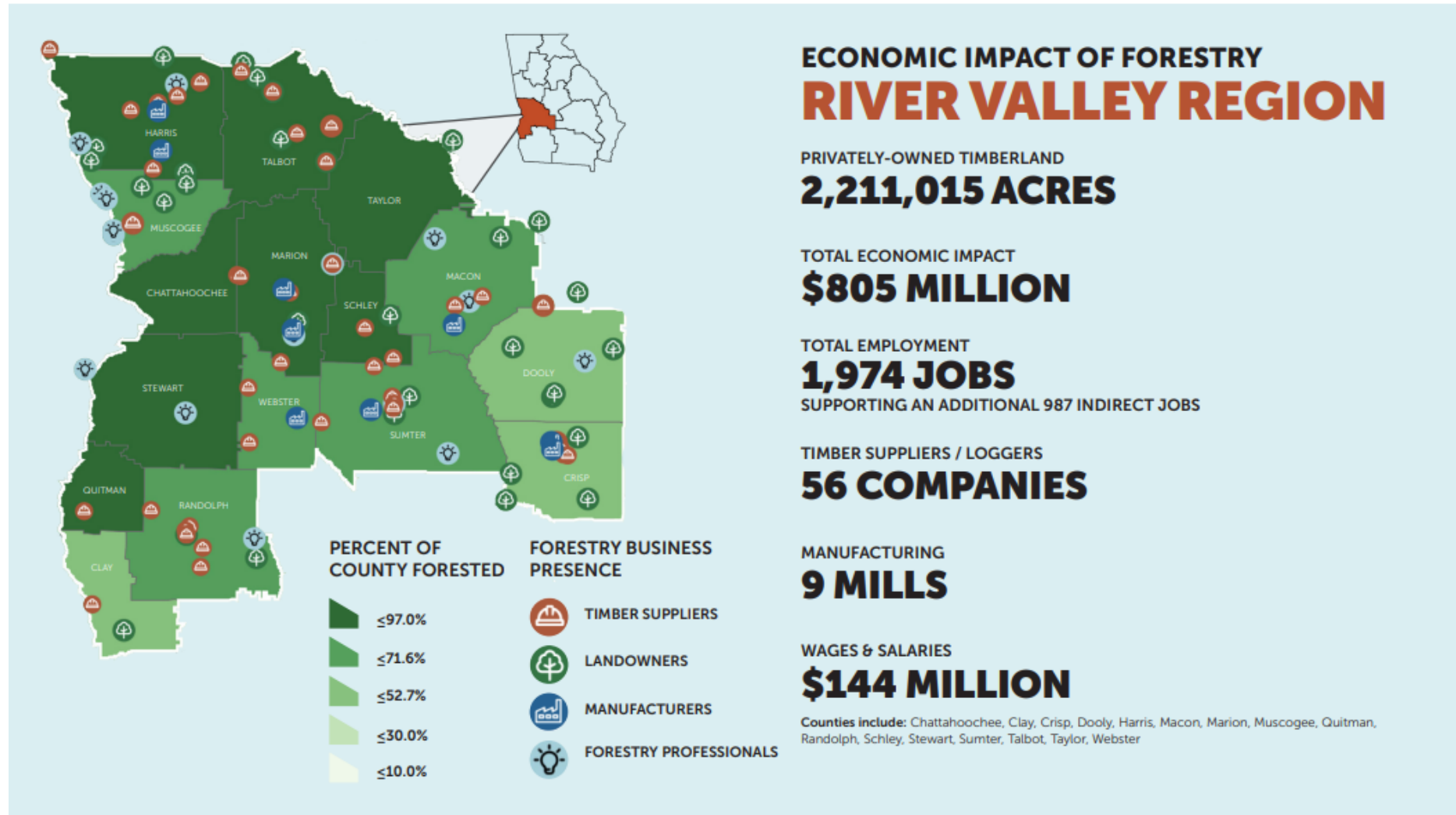


Rep. Sam Watson
R - Moultrie

**ELIMINATES THE
AD VALOREM TAX
ON FORESTRY
EQUIPMENT**

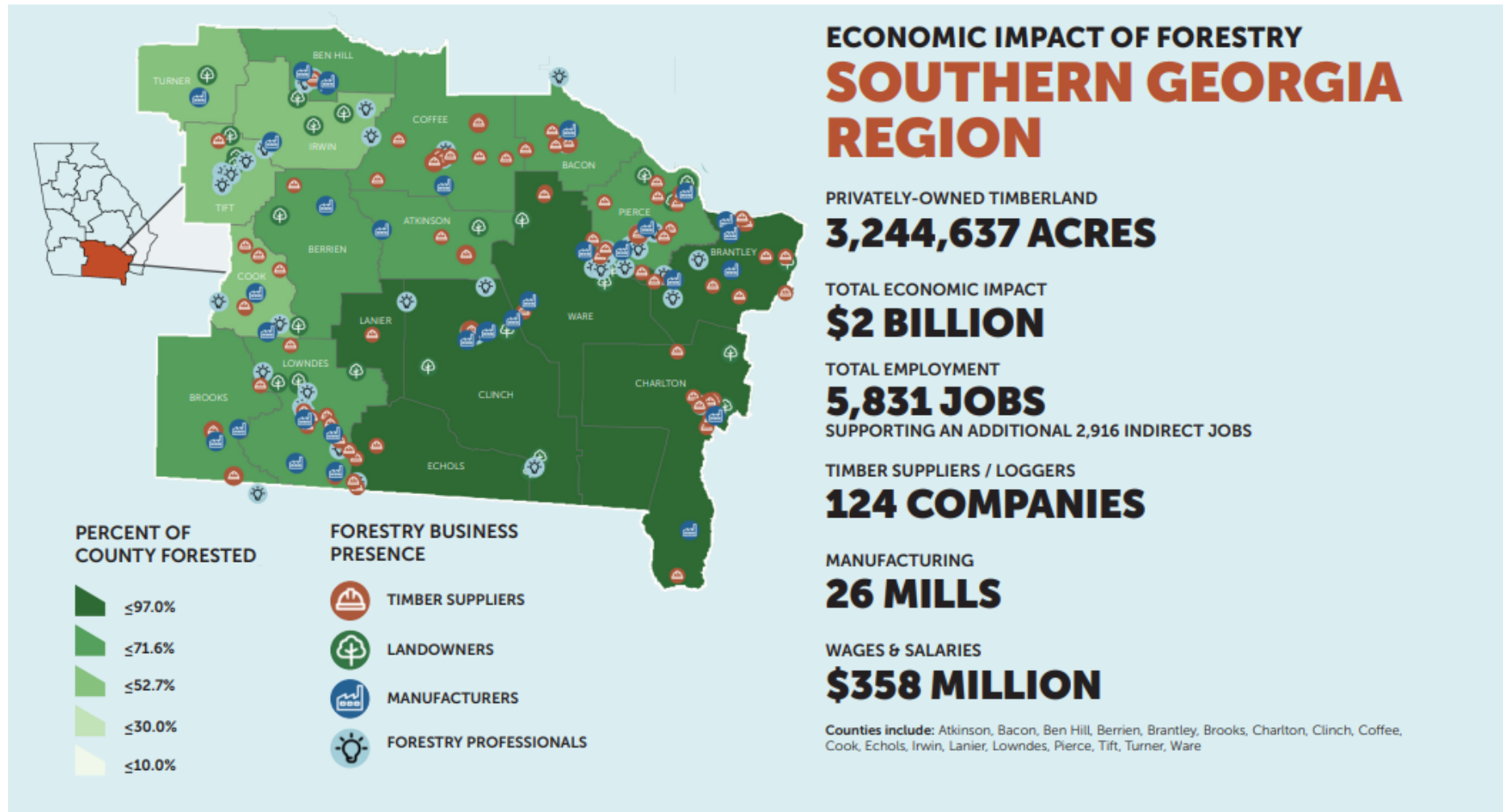
FORESTRY IS CRITICALLY IMPORTANT TO OUR COMMUNITIES

Managed timberlands, forestry businesses and forest product manufacturing are an essential part of Georgia's success as the #1 Forestry State in the Nation. At the local level, landowners and forestry businesses are a driving force of the economy, providing good paying jobs and increased investments and tax revenue that is supporting a quality of life in our communities.



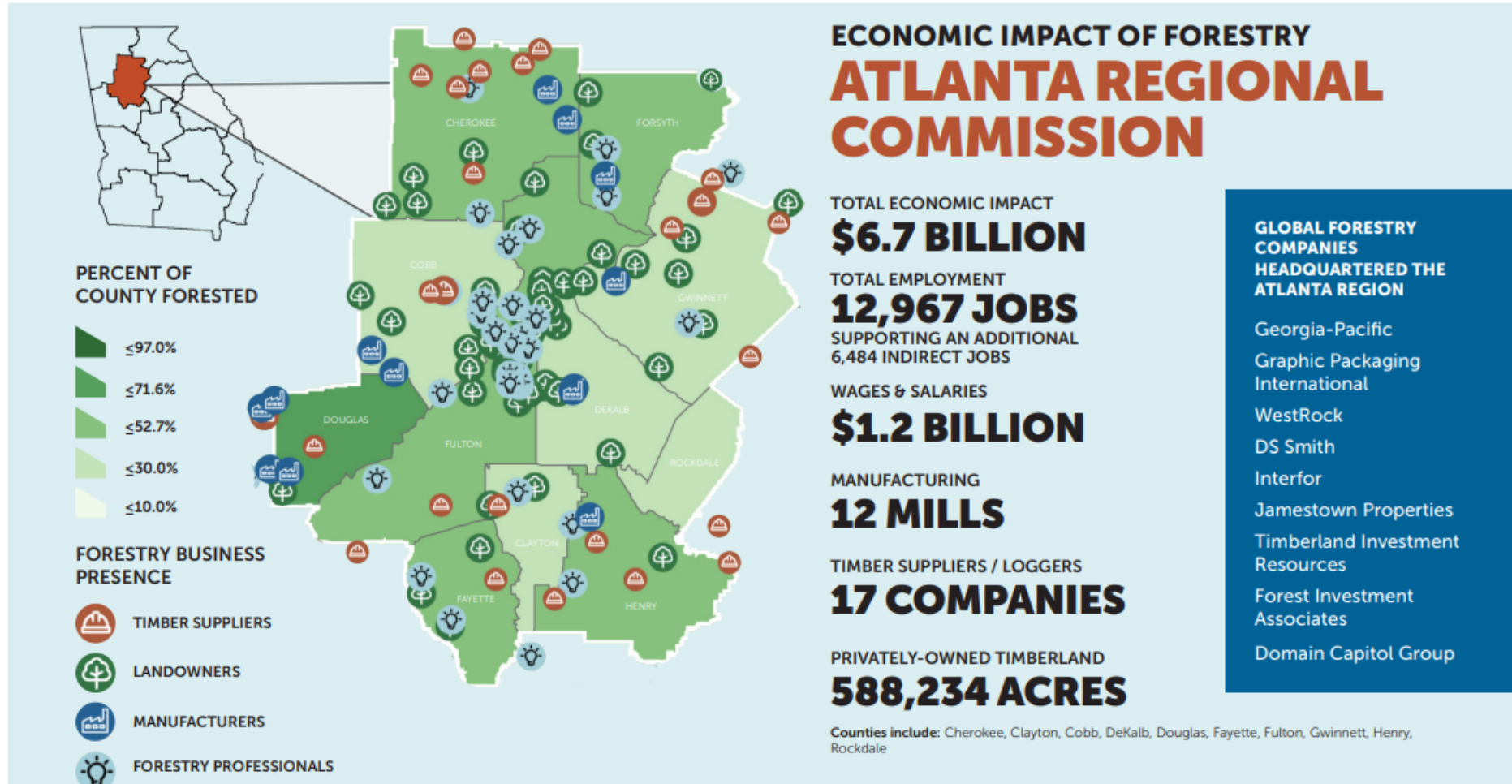
FORESTRY IS CRITICALLY IMPORTANT TO OUR COMMUNITIES

Managed timberlands, forestry businesses and forest product manufacturing are an essential part of Georgia's success as the #1 Forestry State in the Nation. At the local level, landowners and forestry businesses are a driving force of the economy, providing good paying jobs and increased investments and tax revenue that is supporting a quality of life in our communities.



FORESTRY IS CRITICALLY IMPORTANT TO OUR COMMUNITIES

Managed timberlands, forestry businesses and forest product manufacturing are an essential part of Georgia's success as the #1 Forestry State in the Nation. At the local level, landowners and forestry businesses are a driving force of the economy, providing good paying jobs and increased investments and tax revenue that is supporting a quality of life in our communities.





**SUPPORT
MANAGED
FORESTS**

**VOTE 'YES' ON
REFERENDUM A**

LETSGROWGEORGIA.ORG