

GEORGIA COUNCIL ON AGING

STATE ADVISORY AGENCY ON ISSUES RELATED TO THE ELDERLY





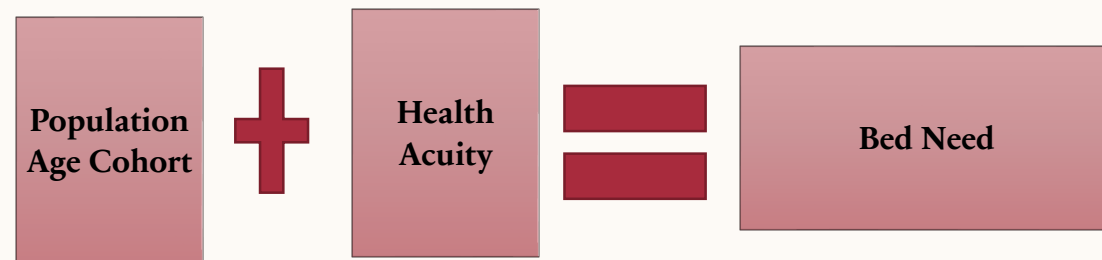
CO-AGE PRIORITY:

TO EXPAND OPTIONS FOR
QUALITY LONG-TERM CARE
TO SERVE GEORGIA'S AT-RISK OLDER ADULTS

*A Supply and Demand Perspective
on Nursing Home CON Reform*

DEMAND

DCH Nursing Home Bed Projection

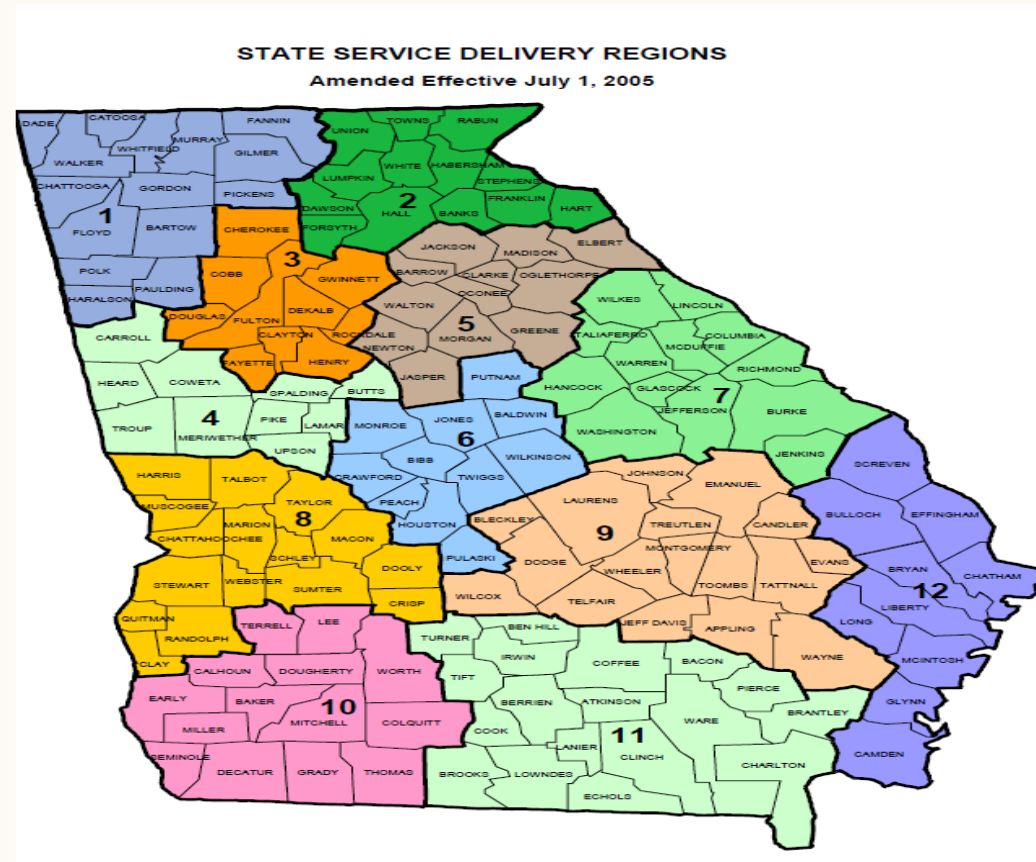


DEMAND VS SUPPLY

DCH 2025 NURSING HOME BED NEED VS. 2022 CON BED SUPPLY

| Service Region | DCH Bed Need | CON beds | CON Bed | Setup & Staffed | Occupancy |
|----------------|--------------|----------|-----------------|-----------------|-----------|
| | 2025 | 2022 | Surplus/Deficit | Beds 2022 | Rate 2022 |
| 1 | 5,357 | 3,761 | (1,596) | 3,241 | 70% |
| 2 | 4,381 | 2,262 | (2,119) | 2,121 | 67% |
| 3 | 22,426 | 10,872 | (11,554) | 8,274 | 67% |
| 4 | 2,935 | 2,322 | (613) | 2,215 | 70% |
| 5 | 3,341 | 2,013 | (1,328) | 1,895 | 72% |
| 6 | 2,481 | 3,496 | 1,015 | 2,887 | 63% |
| 7 | 2,513 | 2,649 | 136 | 2,802 | 61% |
| 8 | 1,735 | 2,470 | 735 | 1,966 | 59% |
| 9 | 1,576 | 2,986 | 1,410 | 2,374 | 72% |
| 10 | 1,782 | 2,306 | 524 | 1,928 | 68% |
| 11 | 2,075 | 2,555 | 480 | 2,601 | 75% |
| 12 | 3,442 | 2,761 | (681) | 2,059 | 66% |
| Statewide | 54,043 | 40,453 | (13,590) | 34,363 | 68% |

STATE SERVICE REGION MAP



Regions 1-5 and 12 have bed deficits with all CON beds in use.
This includes all north Georgia regions and Savannah coastal.

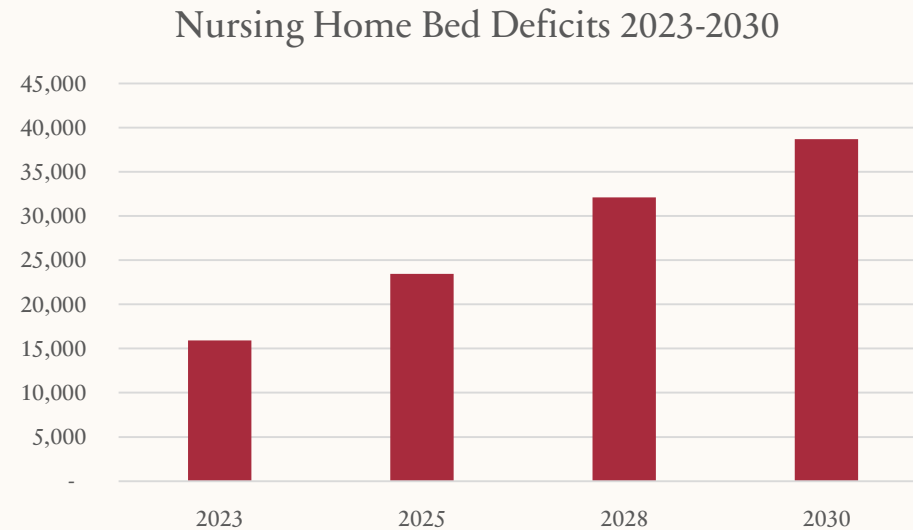
NURSING HOME BED NEED PROJECTION 2023 – 2030

| Year | Population | Bed Need | Population | Bed Need | Population | Bed Need | Population | Bed Need | Bed Need | Current | Bed | 95% of | Bed | 68% of | Bed |
|------|------------|----------|------------|----------|------------|----------|------------|----------|----------|----------|----------|---------|----------|---------|----------|
| | Age 0-64 | 0.43 | Age 65-74 | 9.77 | Age 75-84 | 32.5 | Age 85+ | 120 | Total | CON Beds | Deficit | Current | Deficit | Current | Deficit |
| 2023 | 9,243,939 | 3,975 | 1,039,701 | 10,158 | 539,467 | 17,533 | 206,256 | 24,751 | 56,416 | 40,493 | (15,923) | 38,468 | (17,948) | 27,535 | (28,881) |
| 2025 | 9,316,299 | 4,006 | 1,093,335 | 11,893 | 592,531 | 19,257 | 240,001 | 28,800 | 63,956 | 40,493 | (23,463) | 38,468 | (25,488) | 27,535 | (36,421) |
| 2028 | 9,419,345 | 4,050 | 1,165,865 | 11,391 | 659,607 | 21,437 | 297,789 | 35,735 | 72,613 | 40,493 | (32,120) | 38,468 | (34,144) | 27,535 | (45,077) |
| 2030 | 9,487,857 | 4,080 | 1,214,207 | 11,863 | 704,288 | 22,889 | 336,270 | 40,352 | 79,184 | 40,493 | (38,691) | 38,468 | (40,716) | 27,535 | (51,649) |

Population per OPB as of June 2023 – Bed need projection formula and current CON beds per DCH

DEMAND & SUPPLY

Without new nursing home beds, deficits will increase.



We face a historic growth of Georgia's older adult population.
From 2,443,884 to 2,951,594 by 2030.
The current CON bed count cannot meet this demand for services.

NURSING HOME CON POLICY

New CON applications accepted only if:

DCH Need Analysis projects bed deficit

AND

Current CON bed occupancy rate reaches 95%

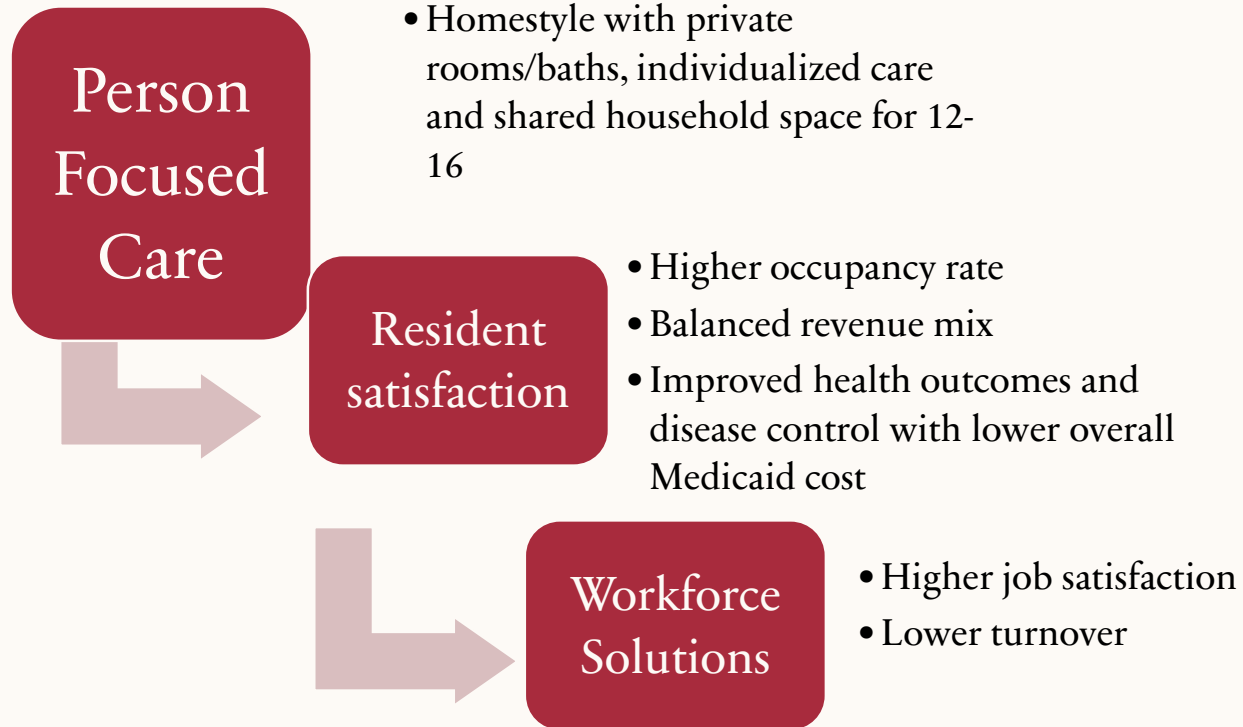
NURSING HOME CON POLICY COULD INCENTIVIZE MODERNIZATION

9

Possible Benefits

- FACILITY MODERNIZATION
- INNOVATIVE CARE MODELS
- CONSUMER OPTIONS
- WORKFORCE RECRUITMENT AND RETENTION
- COST SAVINGS
- IMPROVED HEALTH OUTCOMES
- PROVEN INFECTION CONTROL
- AFFORDABLE NEW PROVIDER ENTRY
- ACCESS FOR UNDERSERVED POPULATIONS

INNOVATIVE CARE MODELS FIT CONSUMER CHOICE



The Green House Project and Eden Alternative are examples of new models

Alternative Long-Term Care Options and CON

| Facility Category | Number | Bed Slots | CON Required | Medicaid Allowed |
|----------------------------------|--------|-----------|--------------|------------------|
| Skilled Nursing Home | 368 | 40,600 | YES | YES |
| Assisted Living Communities | 295 | 24,244 | NO | NO |
| Personal Care Homes 25+ beds | 156 | 8,977 | YES | NO |
| Personal Care Homes 7-24 beds | 356 | 5,781 | NO | YES |
| Personal Care Homes 2-6 beds | 864 | 3,951 | NO | YES |

Medicaid restrictions limit access for underserved populations

Solutions Beyond CON

Provide intermediate level
services in less costly
alternative settings

| | |
|-----------------|--|
| Lift | Prohibitions against Medicaid in LTC facilities |
| Expand | CCSP Medicaid at-home care |
| Increase | Home-health provider rates to sustain supply |
| Support | Family caregivers |
| Fund | Adult Day Care |

CON REFORM GOALS

- Increase access to care for underserved populations, especially access to Memory Care
 - Decrease overall costs of health care
- Improve health outcomes through modern person-centered care models

2024 OBJECTIVE:

**NURSING HOME
MODERNIZATION
STUDY
COLLABORATION**