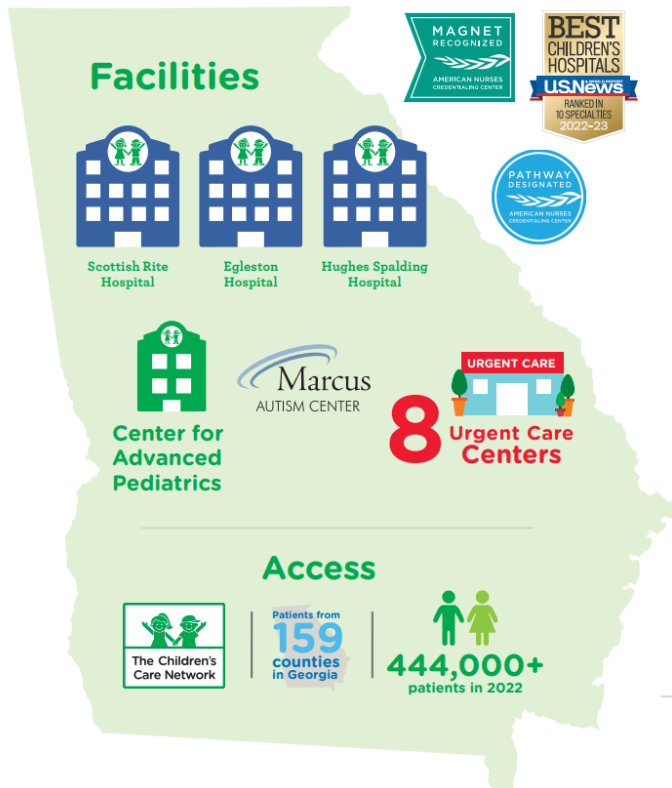


Our Commitment to Rural Health

Georgia House Rural Development Council Meeting
November 16, 2023



Children's at a Glance



Recognition

- U.S. News & World Report: “Best Children’s Hospitals”
- Atlanta Business Chronicle: “Healthiest Employers in Atlanta”



2022-23 Rankings

- Aflac Cancer and Blood Disorders Center—No. 7
- Gastroenterology—No. 7
- Nephrology—No. 9
- Urology—No. 10
- Orthopedics—No. 11
- Neurology—No. 11
- Pulmonology—No. 16
- Cardiology and Heart Center—No. 18

Research & Teaching

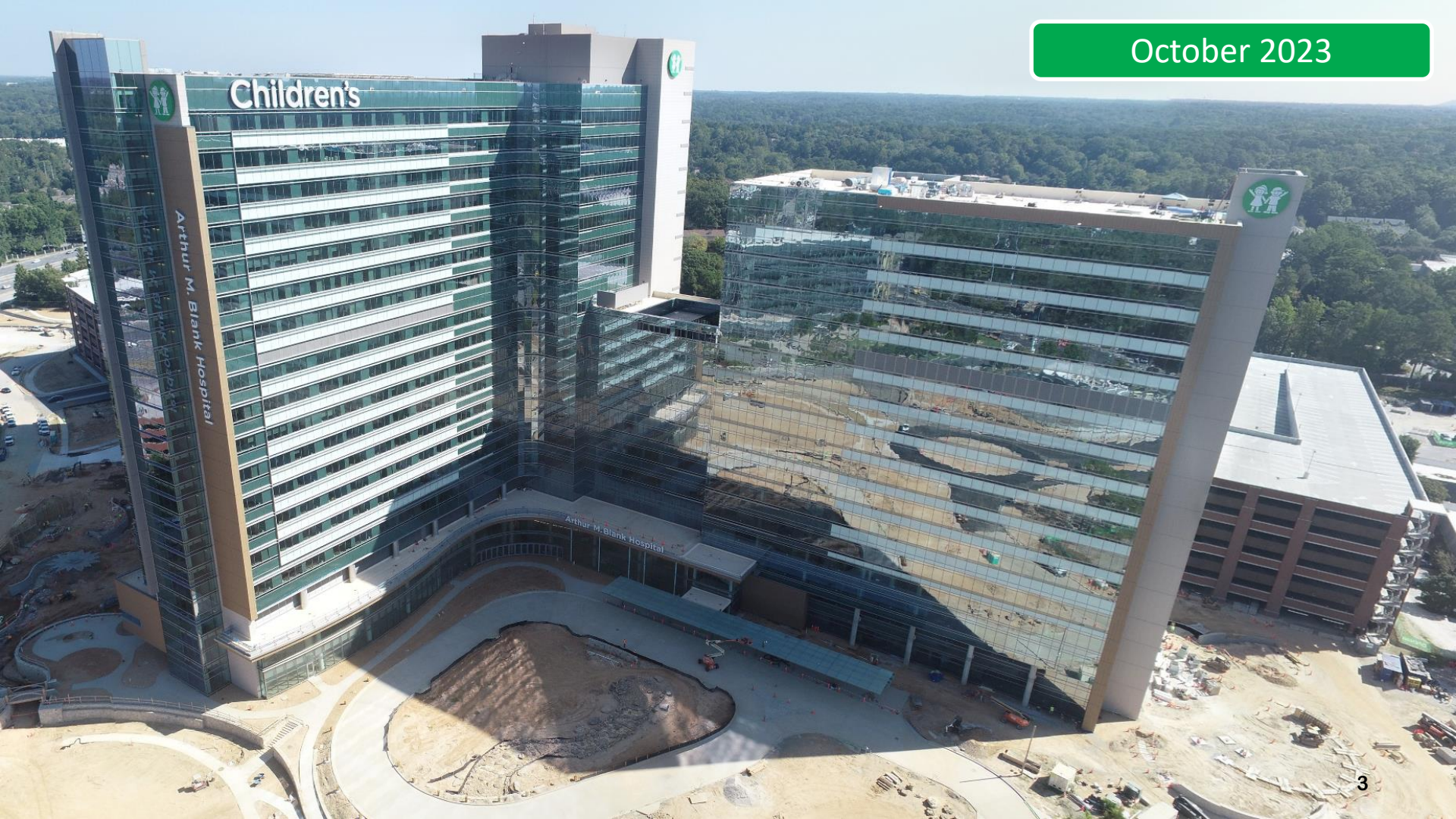


STRONG⁴LIFE
813,000+ kids served in 2022

60+ specialties with access to **2,300** physicians

2,089 patients enrolled in clinical research





Rural Health

Children's announced an affiliation with Mercer University School of Medicine aimed at providing rural children timely, quality care close to home. These initiatives have been identified and will be implemented by Mercer, and Children's will provide pediatric expertise to support these initiatives.



1

Rural Hospital Support

Assist rural hospitals with meeting the needs of pediatric patients

2

Rural Pediatrician Support

Partner with rural pediatricians to offer telehealth services and training

3

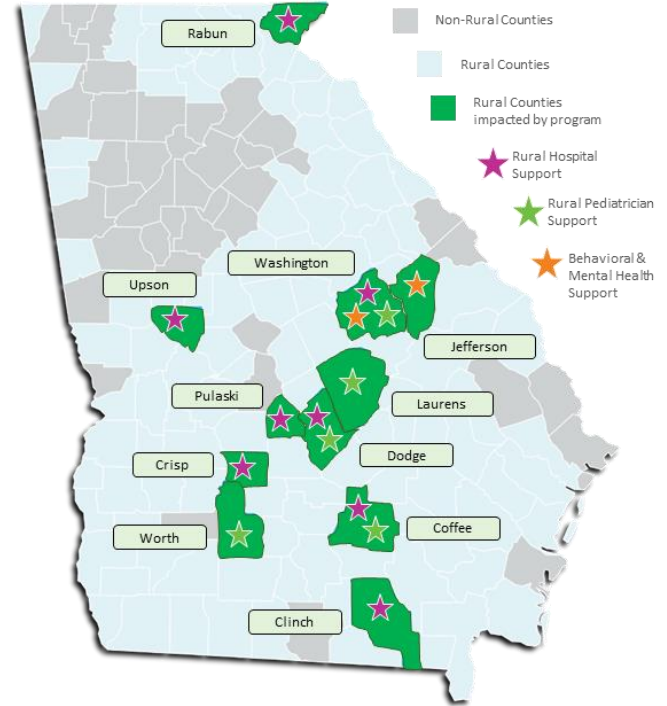
Behavioral & Mental Health Support

Reach rural communities with behavioral and mental health services

4

Rural Pediatrician Pipeline Support

Provide scholarships for Mercer medical students committed to rural health





Children'sSM
Healthcare of Atlanta

MERCER
UNIVERSITY
SCHOOL OF MEDICINE

GEORGIA
Rural  **Health**
INNOVATION CENTER
AT MERCER UNIVERSITY SCHOOL OF MEDICINE

RURAL PEDIATRIC HEALTH INITIATIVE



**Provide rural children timely,
quality care close to home**

**Appropriate referrals
to regional facilities**

**Network of rural
pediatricians**

MERCER
UNIVERSITY

SCHOOL OF MEDICINE

These initiatives have been identified and are implemented by the Mercer School of Medicine, working with the Georgia Rural Health Innovation Center

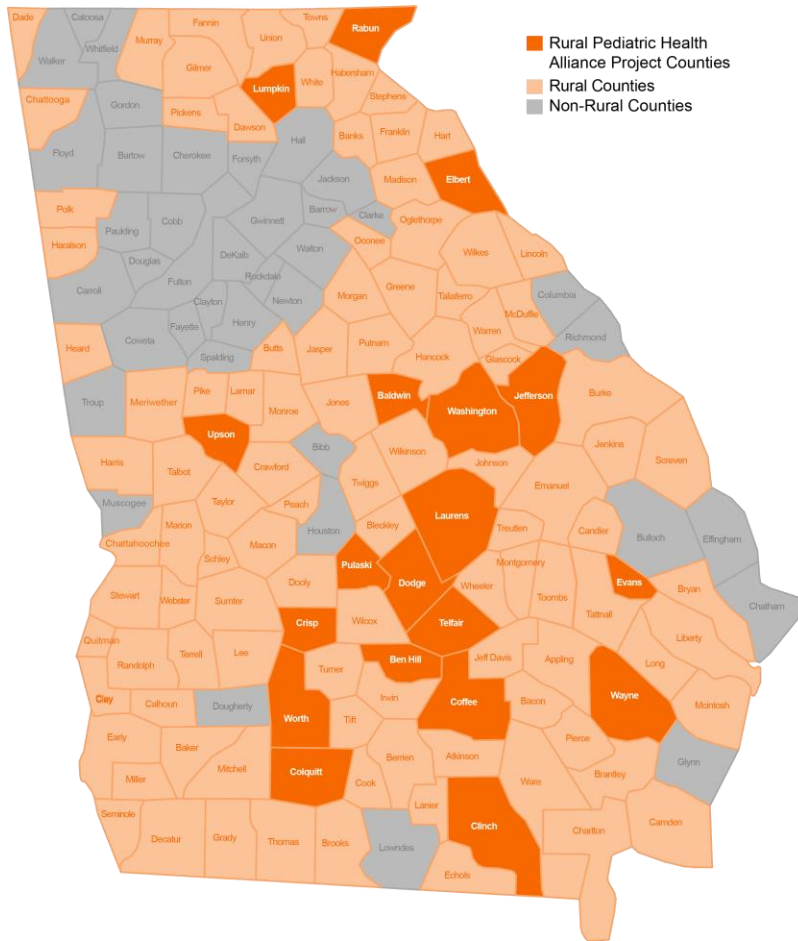


Children'sSM
Healthcare of Atlanta

Children's Healthcare of Atlanta will provide pediatric expertise to support these initiatives

**Rural
Emergency
Department
Support**

**Rural
Behavioral &
Mental Health
Support**



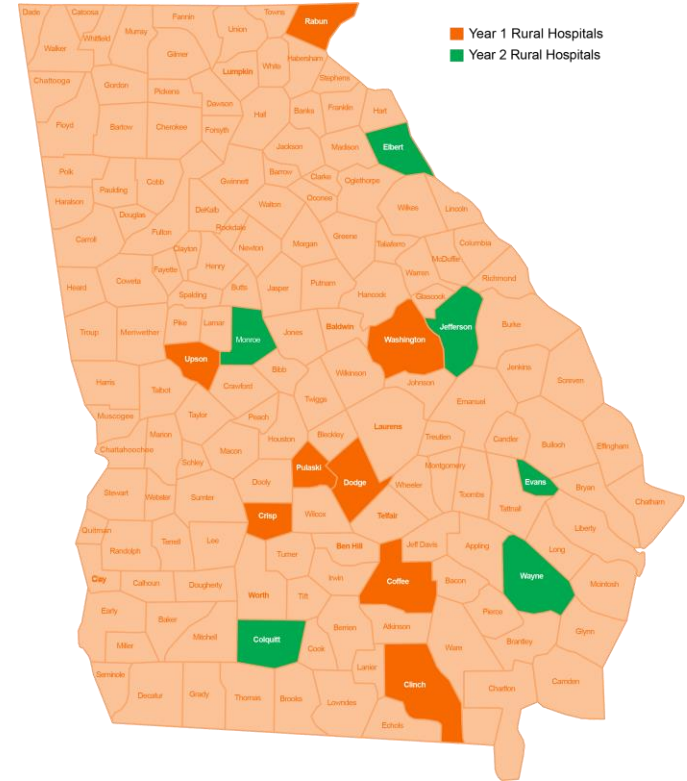
**Rural
Pediatric
Support**

**Children's
Healthcare of
Atlanta Rural
Scholars
Program**

Rural Emergency Department Support

Hospital Emergency Departments

- Create rural pediatric emergency department **network equipped for pediatric emergencies**
- Enhance **ER staff skills** in managing pediatric emergencies
- Develop and implement **standard operating procedures** and best practices
- Develop and implement a **manageable pharmaceutical formulary** for rural hospitals
- Implement **on-demand telehealth** consult program
- Implement robust **transfer protocols** and agreements



◆ WSJ NEWS EXCLUSIVE

Children Are Dying in Ill-Prepared Emergency Rooms Across America

Hospitals and regulators have done little to ensure E.R.s are ready to treat children in emergencies, while researchers prove taking basic steps can save lives

Photographs provided by family show Matthew Melancon, left, and Avery Guzman-Mendez, who died 20 years apart after being treated at the same emergency room in Texas.

By [Liz Essley Whyte](#) [Follow](#) and [Melanie Evans](#) [Follow](#)

Oct. 1, 2023 5:30 am ET

Wall Street Journal

Train all ER staff in Pediatric skills

Institute Protocols

Commit to Pediatric Readiness

Stock Child Appropriate Supplies

Children's Initiative Emergency Department Plan

Training ER Nurse and Staff

Institute Established Best Practice Protocols

Hospital-wide Commitment to Pediatric Readiness

Full assessment and Provision of Needed Supplies

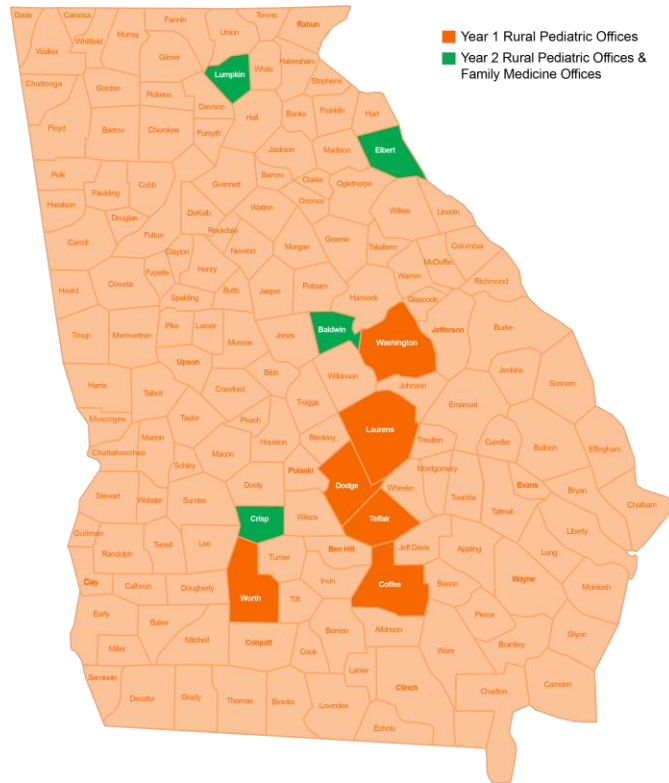


Children's Healthcare of Atlanta

Rural Pediatrician Support

Physician Office Hubs for Specialty Care and Training

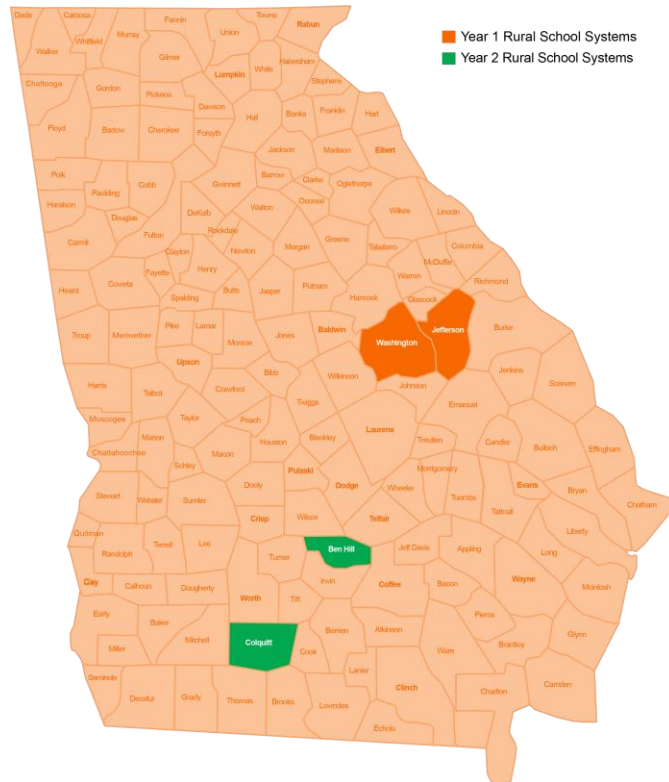
- Telehealth specialist support in conjunction with rural pediatric offices
- Monthly lunch webinars for pediatric clinicians to include: topics of interest for rural pediatricians, case studies by rural practitioners, and research/CME available
- Summer experience with Children's Scholars to include: speaker series, Children's days, practitioner shadowing, and research presentations
- Monthly Pediatric Newsletter to include: articles from Children's experts, alliance info, Children's offerings



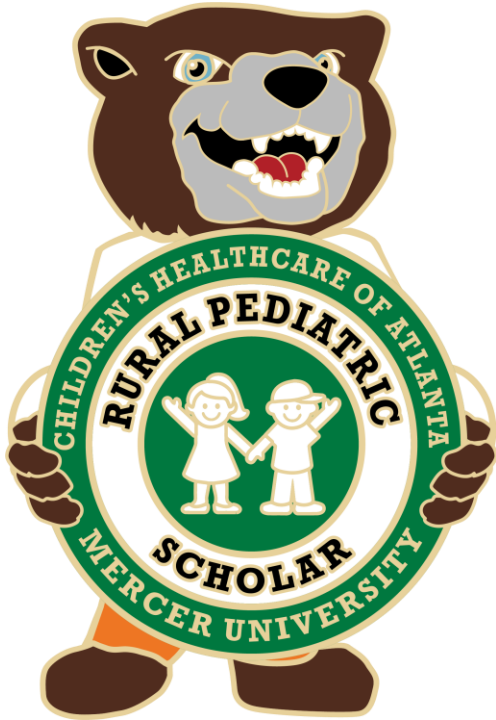
Rural Behavioral & Mental Health Support

Mental Health and Wellness

- Assist, Promote and facilitate psychiatric services in rural communities.
- Pilot Wellness Screening for every school aged child (K-12) in two rural communities
- Provide Suicide Awareness and Prevention training
- Identify and develop potential school sites with the greatest needs and lack of resources to develop emergency plans, educate emergency services, and provide telehealth equipment with user support



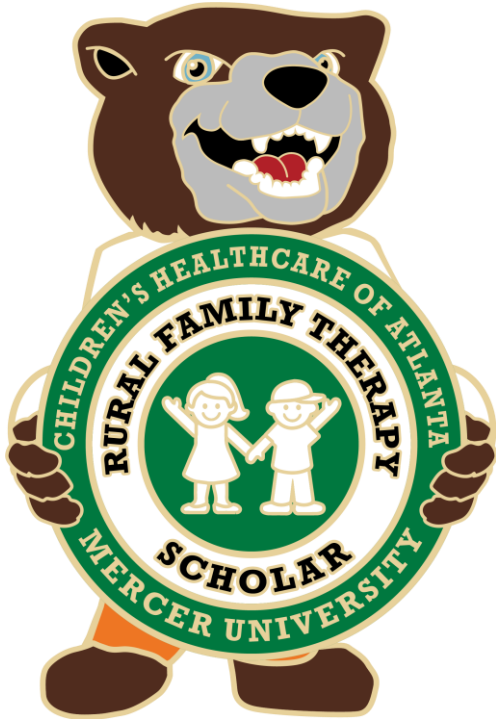
Children's Healthcare of Atlanta Rural Pediatric Scholar Program



- Committed to pediatrics
- Strong roots in rural Georgia
- Strong commitment to live and practice in rural, underserved Georgia
- Maintain good academic standing
- Scholars participate in Pediatric Alliance



Children's Healthcare of Atlanta Rural Family Therapy Scholar Program



- Committed to family therapy with focus on children
- Strong roots in rural Georgia
- Strong commitment to live and work in a rural, underserved Georgia
- Committed to working with rural pediatric or rural family medicine practices full time
- Certificate in autism care management
- Maintain good academic standing
- Scholars participate in Pediatric Alliance